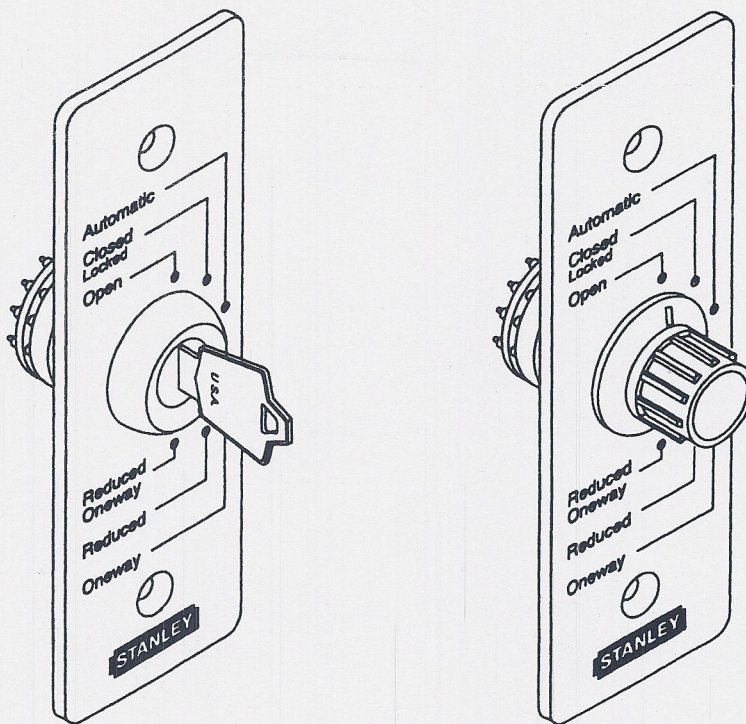


ROTARY/KEY SWITCH INSTALLATION INSTRUCTIONS



FOR DURA-GLIDE SLIDING DOORS

NOTE

Read through this entire instruction booklet to familiarize yourself with the product prior to installation.

I. DESCRIPTION AND OPERATION

The Rotary/Key Switch option offers the replacement of the (3) Header mounted function rocker switches (AUTO/CLS/OPN, Enter, and Reduced Open) with a single, convenient, and easy to use rotary selectable panel.

A 6-conductor wire harness, 15 feet in length, connects the Interface Board to the Rotary/Key Switch.

Allowing 2 feet of slack in the wire harness over the entire length, the maximum distance between the Rotary/Key Switch and the Interface Board is approximately 13 feet.

An illuminated rocker switch is utilized for header power.

The following functions are selectable with the Rotary/Key Switch:

- Automatic
- Closed & Locked
- Open
- Reduced Opening/One-Way
- Reduced Opening (2-way traffic)
- One-Way (Full Open)

The Rotary and KeySwitch option assemblies are offered either factory installed, or as a Field Retrofit Kit.

The units can be flush-mounted in the header or jamb, or surface applied with the use of a Surface Mount Box for solid wall applications. Surface mounting of the Key Switch requires a $\frac{3}{4}$ " diameter x $\frac{3}{8}$ " deep clearance hole in the mounting wall for wire routing.

NOTE

For Factory Installations, the Rotary/Key Switch mounting location **MUST** be specified on the Customer Order.

II. FACTORY INSTALLATION

NOTES

Dimensions listed below are approximate.

“Default Locations” - same area present Rocker/Toggle Switches are mounted.

The following guidelines have been set for the factory installation of the Rotary/Key Switch:

OPERATOR TYPE	DEFAULT LOCATION	OPTIONAL MOUNTING
D/G 2000	Header Track	Jamb, ‘O’ or ‘P’ Panel Lead Stile
D/G 3000	Header Cover (Right-End, 4” from end cap)	Jamb Only
D/G 5200	‘O’ or ‘P’ Panel Lead Stile (Approx. 74” from floor)	Jamb Only
D/G 5300	Jamb	Jamb Only

III. PRODUCT PART NUMBERS

The following table summarizes the Part Numbers for the Rotary/Key Switch Options:

STANLEY P/N	DESCRIPTION
313692	Rotary Switch – Factory Installed
313695	Key Switch – Factory Installed
313719	Rotary Switch – Field Retro-Kit (Includes surface mount box & wiring)
313720	Key Switch – Field Install – Kit (Includes surface mount box & wiring)
313694	Surface Mount Box
313697	Snap-in Plug Kit (Use to plug Rocker Switch cut-out) *Need up to 3, 1 for each switch cut-out.
(Individual Items)	
413549	Wire Harness, Switch to Interface Board
413550	Rotary Switch Ass’y (Plate & Rotary Switch)
413584	Key Switch Ass’y (Plate & Key Switch)
413733	Wire Harness, Power Switch to Interface Board
320214960	#6 Screw (to flush mount switch plate to header/jamb)
311988960	#6–32 x 3/8” (to mount switch plate to surface mount box)

IV. INSTALLATION INSTRUCTIONS

A. Flush Mount – Field Retrofit

Review figures 1–4 prior to drilling any holes.

TEMPLATE MACHINING

1. Locate the area where the function switch is to mount.
See Figure 2 if mounting to jamb.
See Figure 3 to mount on 2000/3000 header.
See Figure 4 to mount on 5200/5300 header.
2. Using a center punch, locate the centers for the access hole for the switch and the mounting holes for the screws. See Figure 1.
3. Cut a 1.125" hole using a hole saw.
4. Using a #36 drill bit (.106" dia), drill the 2 holes for the mounting screws.
5. Run the harness from the I/O board through the switch access hole and plug it into the connector on the back of the switch. See Figure 2.
6. Wire the bare end of the harness according to the Wiring Chart in Section C, Electrical Wiring.
7. Test switch.
8. Mount the switch plate using the (2) #6 self-tapping screws provided.

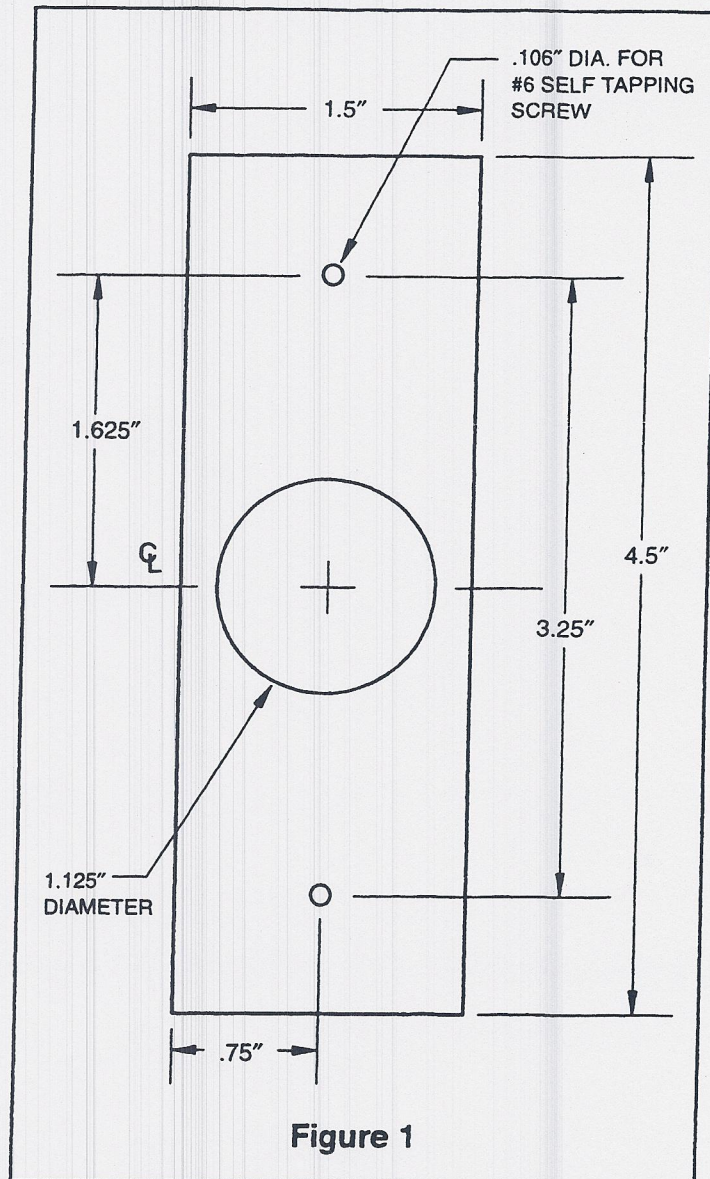
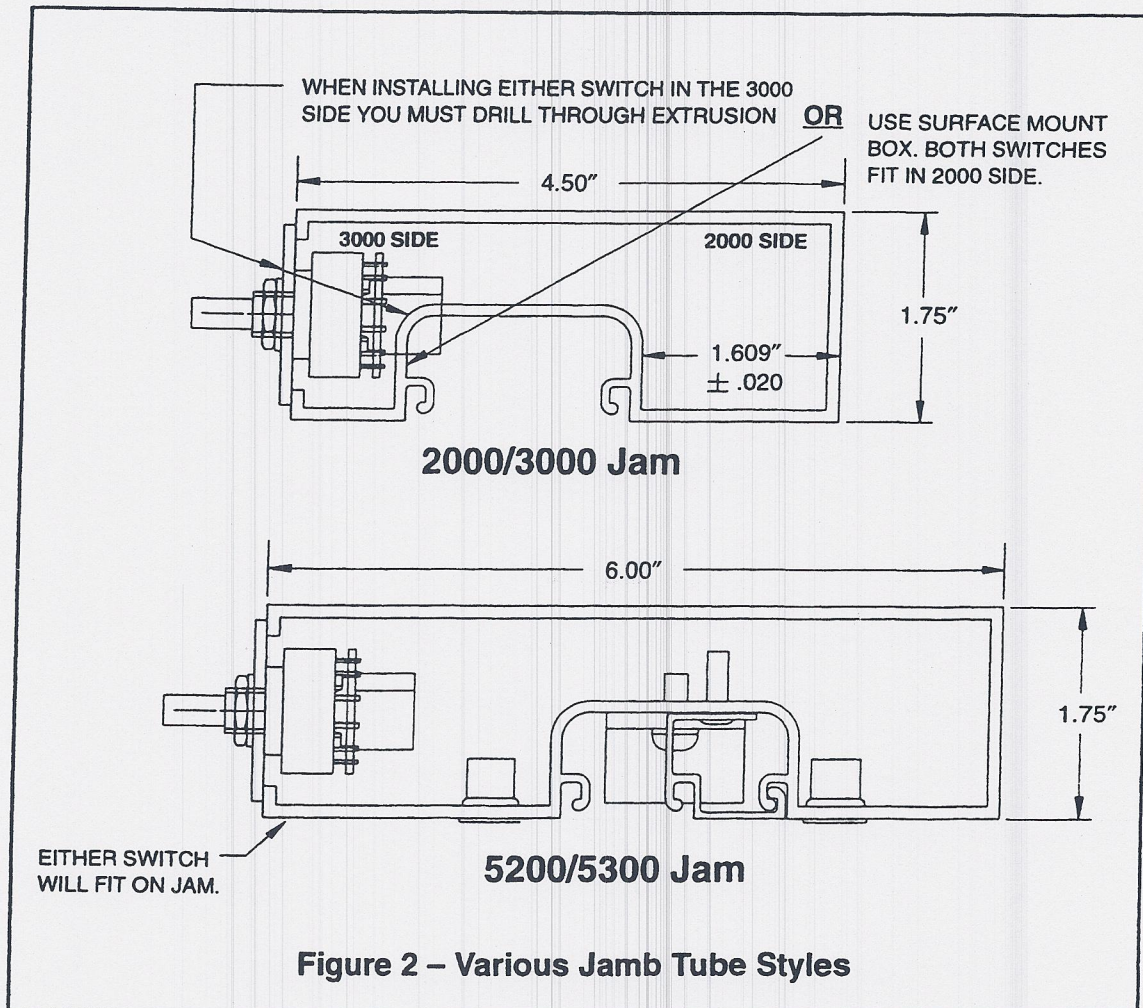


Figure 1

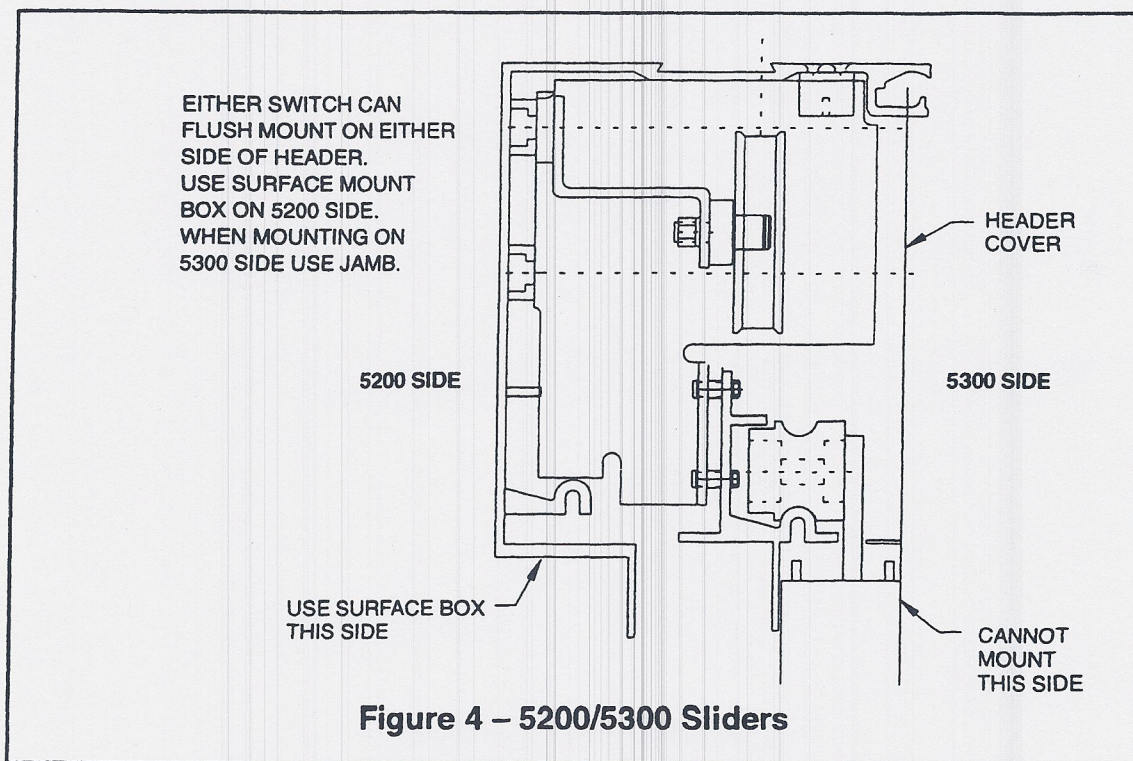
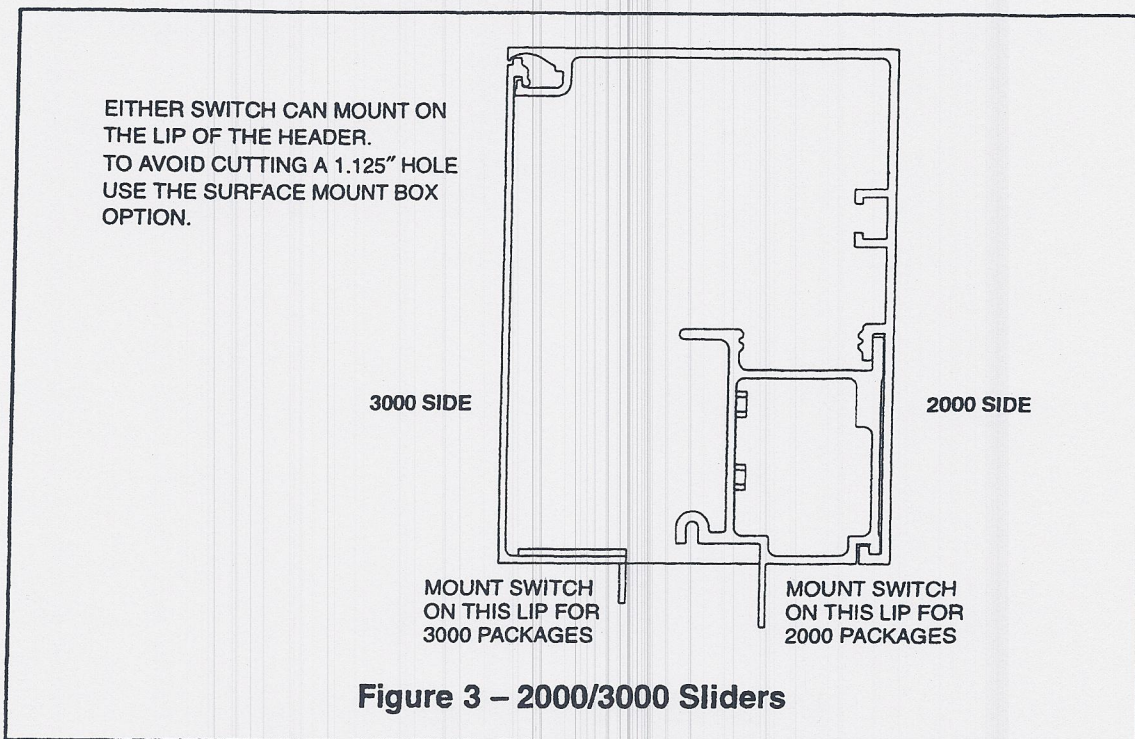
IV. INSTALLATION INSTRUCTIONS (continued)

JAMB MOUNTING



IV. INSTALLATION INSTRUCTIONS (continued)

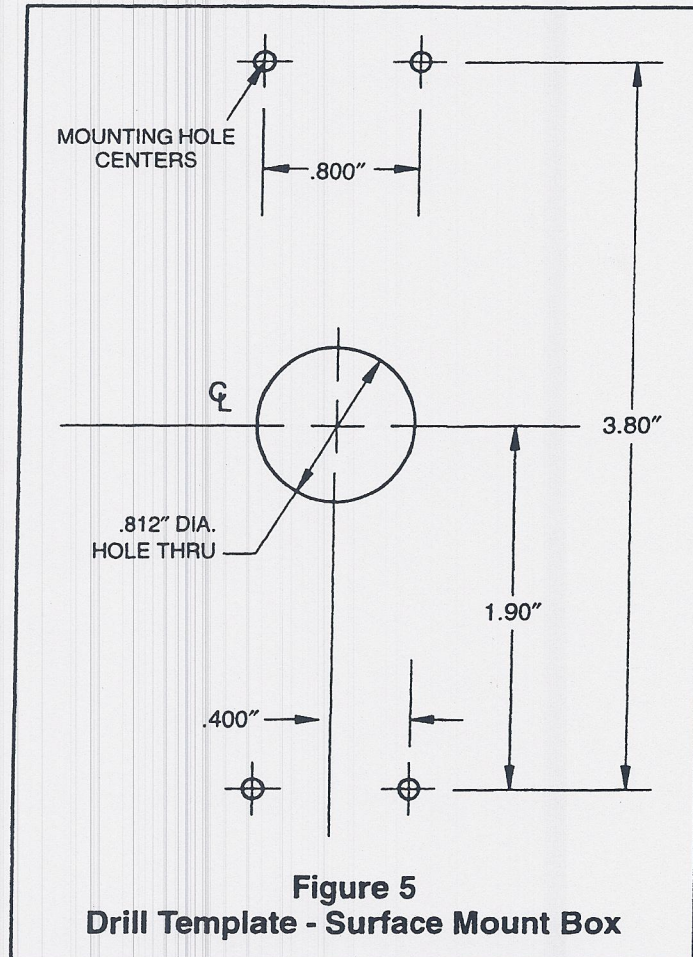
HEADER MOUNTING



IV. INSTALLATION INSTRUCTIONS (continued)

B. Surface Mount

1. Locate the area where the switch is to be mounted.
2. Using the drill template Figure 5:
 - a) drill the (4) mounting hole centers with the appropriate drill size (for the anchor) to secure the Surface Box to the wall.
 - b) If mounting a Key Switch, drill the $\frac{3}{4}$ " dia. x $\frac{3}{8}$ " deep hole for wire and terminal block clearance. (A Surface Mount Box with Rotary Switch will mount flush to the wall).
3. Mount the Surface Mount Box to the wall with the appropriate anchor.



IV. INSTALLATION INSTRUCTIONS (continued)

C. Electrical Wiring

The 6-conductor wire harness is to be terminated to the I/O Board as follows:

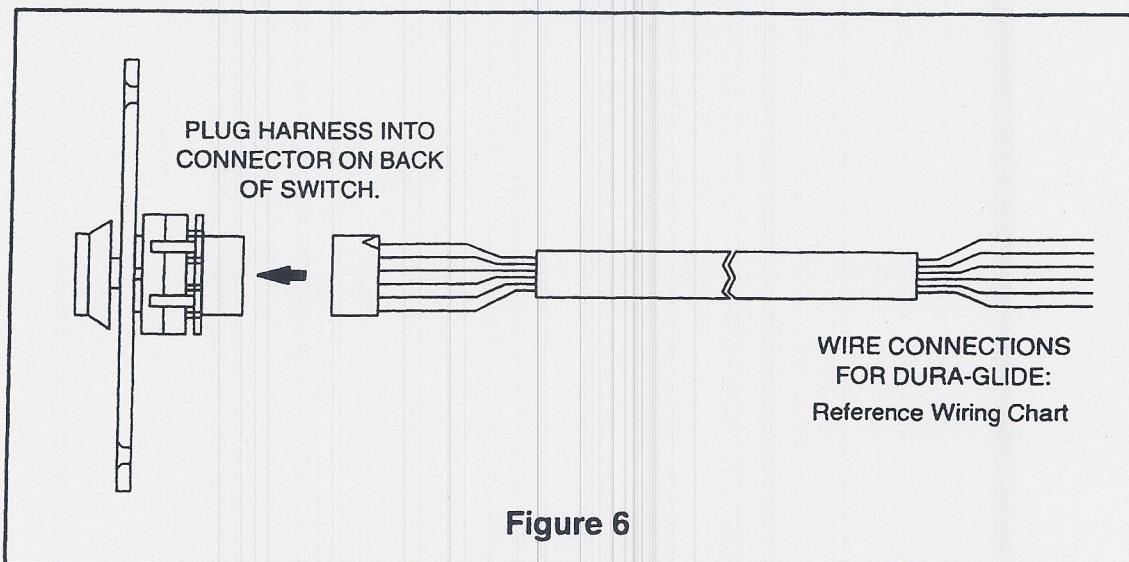
Wire Connections To I/O Board P/N 313383

COLOR	TB1 ON I/O BOARD	FUNCTION
Brown	4	Automatic
Yellow	5 & 9	Switch 1 Common
Black	6	Hold Open
Red	7	Enter Switch
Orange	8	Enter Switch Common
Green	10	Reduced Open

NOTE

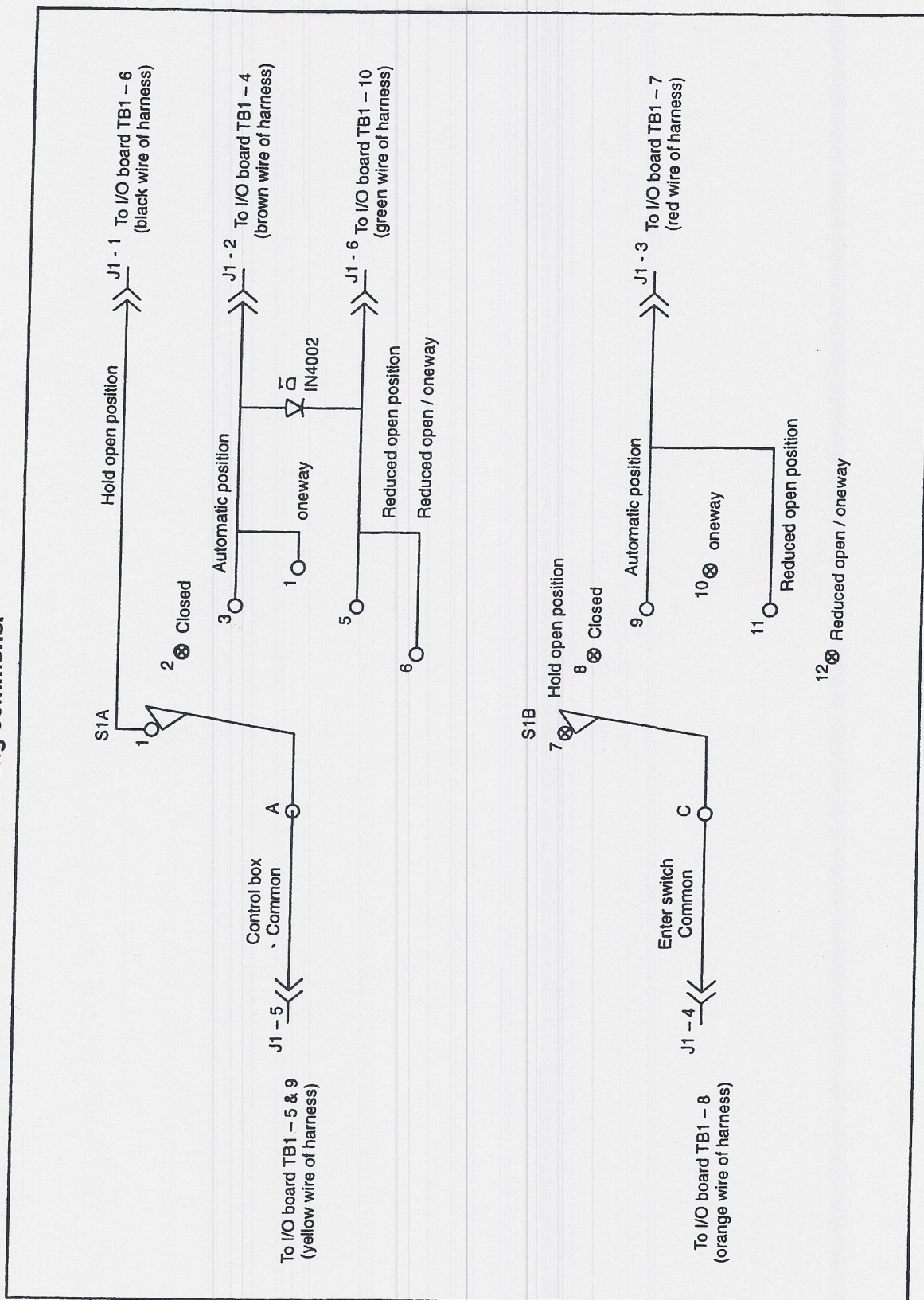
A wire jumper must be installed on TB1 between terminals 7 and 8 if there is no door position switch or solenoid lock used in the system.

Route the wire harness to the cover or jamb (for flush mount), or externally for surface mount. Plug the wire harness connector to the Rotary/Key Switch prior to mounting the Switch Plate.



A schematic of the Rotary/Key Switch is shown on the last page of this manual.

S1 – Rotary switch 6 position, with 2 non shorting commons.



SCHEMATIC DIAGRAM
Rotary/Key Switch and I/O Board Connections

STANLEY Access Technologies

STANLEY ACCESS TECHNOLOGIES

Route 6 & Hyde Road

Farmington CT USA 06032

(800) 7-ACCESS or (800) 722-2377

(860) 677-2861