



# CONTENTS

|   |          |
|---|----------|
| 1. Instructions to installer.....       | G203T.1  |
| 2. General requirements.....            | G203T.1  |
| 3. Installing frame.....                | G203T.2  |
| 4. Installing floor guides.....         | G203T.3  |
| 5. Installing SX panels (SX-SX-SO)..... | G203T.4  |
| 6. Installing SO panel (SX-SX-SO).....  | G203T.5  |
| 7. Installing panels (SX-X-O).....      | G203T.6  |
| 8. Installing panels (X-X-O).....       | G203T.7  |
| 9. 2003T parts list.....                | G203T.8  |
| 10. Microprocessor control.....         | G203T.9  |
| 11. Belt and cable connections.....     | G203T.10 |
| 12. Activating devices.....             | G203T.10 |
| 13. Motion sensor prep.....             | G203T.10 |
| 14. Safety considerations.....          | G203T.11 |
| 15. Decal application.....              | G203T.11 |

## SERIES 2003T ELECTRIC SLIDING TELESCOPING DOOR INSTALLATION INSTRUCTIONS

### 1. INSTRUCTIONS TO INSTALLER

- This door is to be installed by a trained and experienced installer with knowledge of local codes and ANSI A156.10 standards for power operated doors.
- To ensure safe and proper operation, the door must be installed and adjusted to conform to Horton Automatics recommendations, all code requirements and ANSI A156.10.
- If there are any questions about these instructions, call Horton Automatics Technical Assistance.

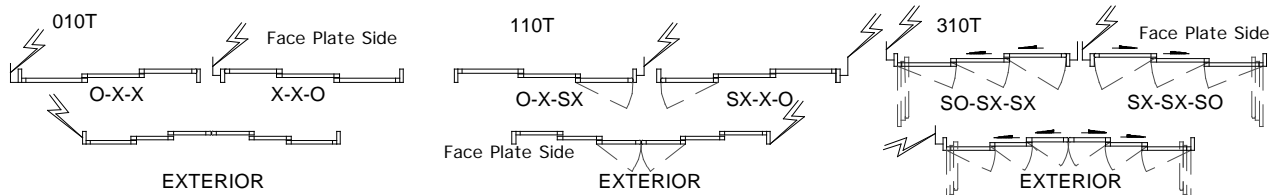
#### INFORMATION TO BE PROVIDED BY THE DISTRIBUTOR TO THE OWNER

- After installation instruct the owner on the safe operation of the door.
- Present the Owners Manual M300 and explain how to perform the daily safety check.
- Show the location of power on / off switch.
- Necessary warnings not covered in these general instructions.
- Date equipment shipped from Horton Automatics.
- Date equipment placed in service.
- Horton Automatics' invoice number for warranty reference.
- Equipment type.
- Accessories included.
- Phone number to call regarding problems or request for service.
- Give caution** to owner: if a potentially hazardous situation is suspected, the door should be taken out of automatic service until a professional inspection is made and the problem is corrected.

### 2. GENERAL REQUIREMENTS

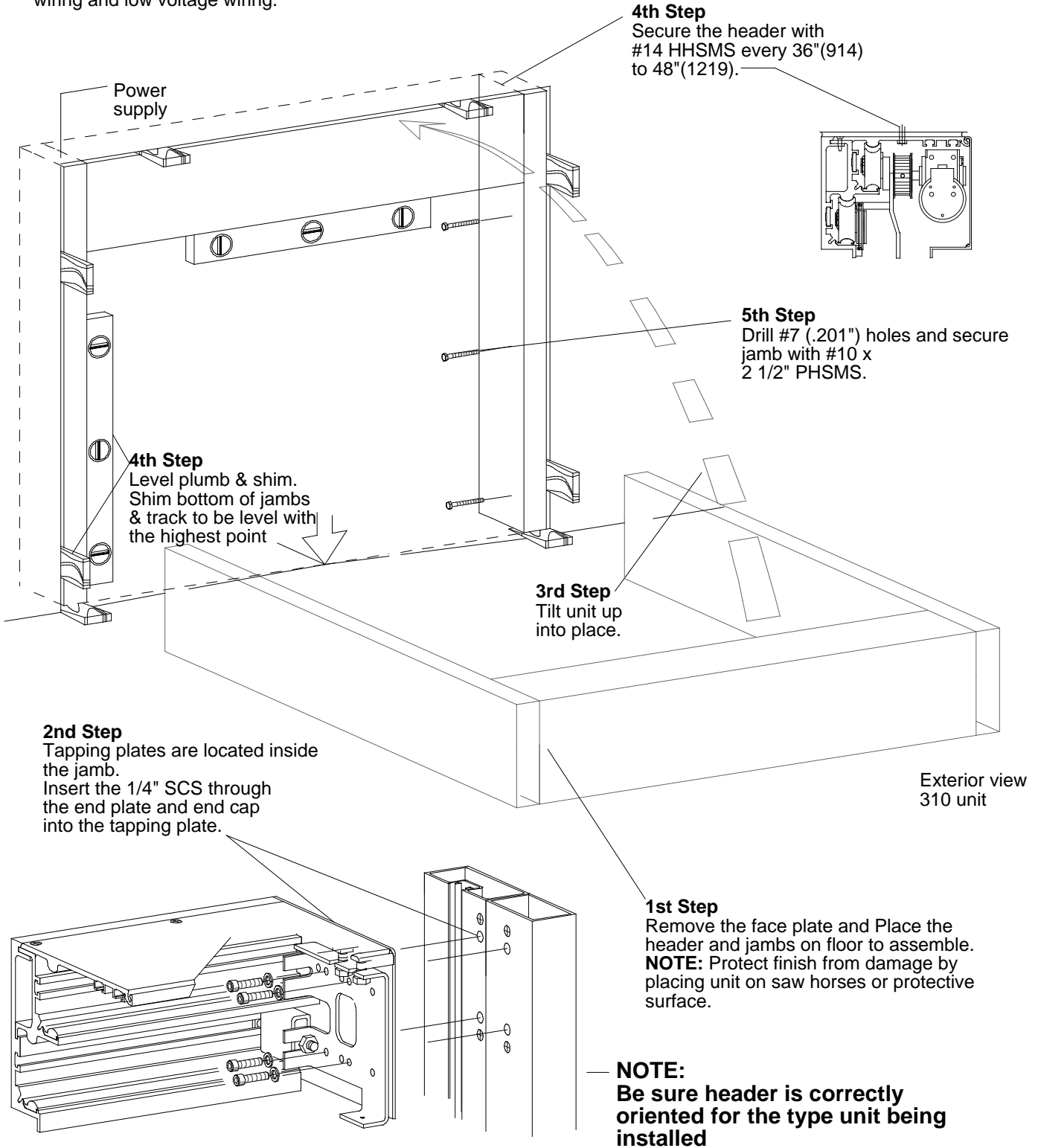
- Power: 120 VAC, 60Hz, 15 Amp service (in conduit) to the inside of the header of each unit. See H202
- Non North American voltages can be 240 VAC, if so be sure the operator has a 240VAC power supply.
- Power may be brought in through the top of the jamb on perimeter mount units or in through the back of surface mount units.
- For remote switch locations, routing of low voltage class II wiring (in conduit) to the operator controls will be required.
- Remote switch locations should be predetermined and wired before installation begins.
- Opening size should be 1/4" taller and 1/2" wider than the unit / frame.
- The opening must be plumb and level, including the threshold area.
- Door panels may be glazed before or after installation.

#### POWER INPUT LOCATIONS



### 3. INSTALLING FRAME

If a recessed threshold is required, this should be done prior to frame installation. Take care that the frame is not racked. Shims will be needed to shim the unit. All the fasteners shown below are provided with each unit. If these are inappropriate, alternate fasteners are shown in the fastener chart. Route power supply wiring and low voltage wiring.



2.210d

#### 310 (SO-SX-SX) INTERIOR VIEW

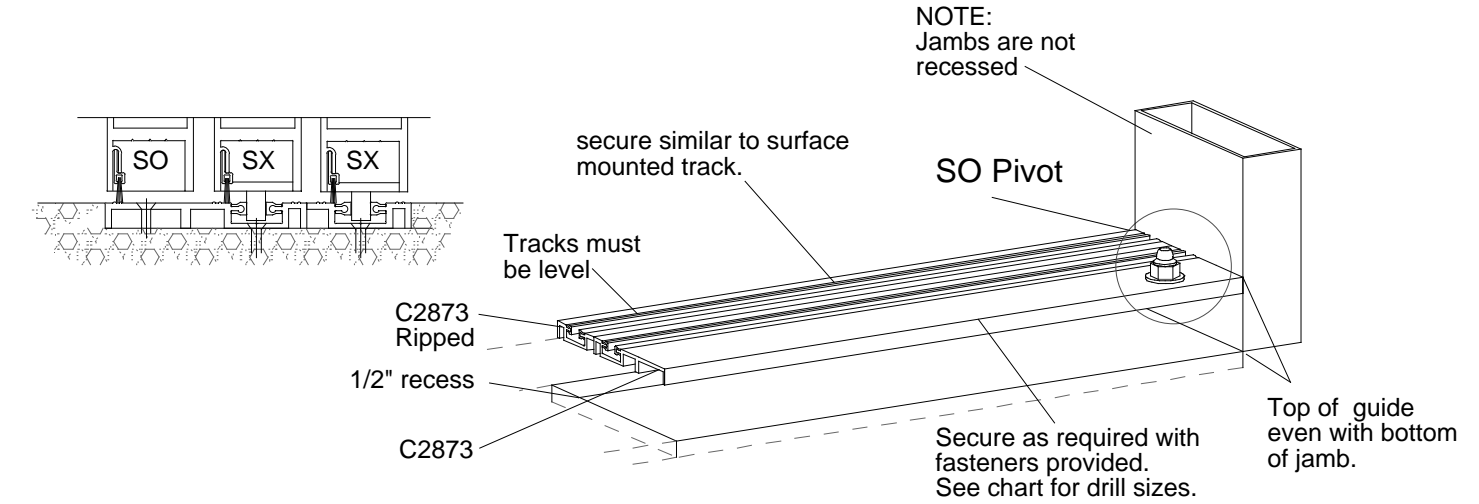
#### FASTENER CHART

| FASTENER SIZE / TYPE | CLEAR DRILL / C'SINK  | SHEET METAL DRILL HOLE | TAP DRILL | TAP SIZE | MASONRY                                   |
|----------------------|-----------------------|------------------------|-----------|----------|---|
| #6 SMS & #6-32 MS    | #25(.149) & #6 c'sink | #31(.120)              | #36(.106) | #6-32    |   |
| #10 SMS & #10-24 MS  | #7(.201) & #10 c'sink | #21(.159)              | #25(.149) | #10-24   | Drill 1/4"(.25) & use C1423 green anchor  |
| #14 SMS & #1/4-20 MS | #F(.257) & #14 c'sink | 3/16(.187)             | #7(.149)  | 1/4-20   | Drill 5/16"(.312) & use C1424 blue anchor |

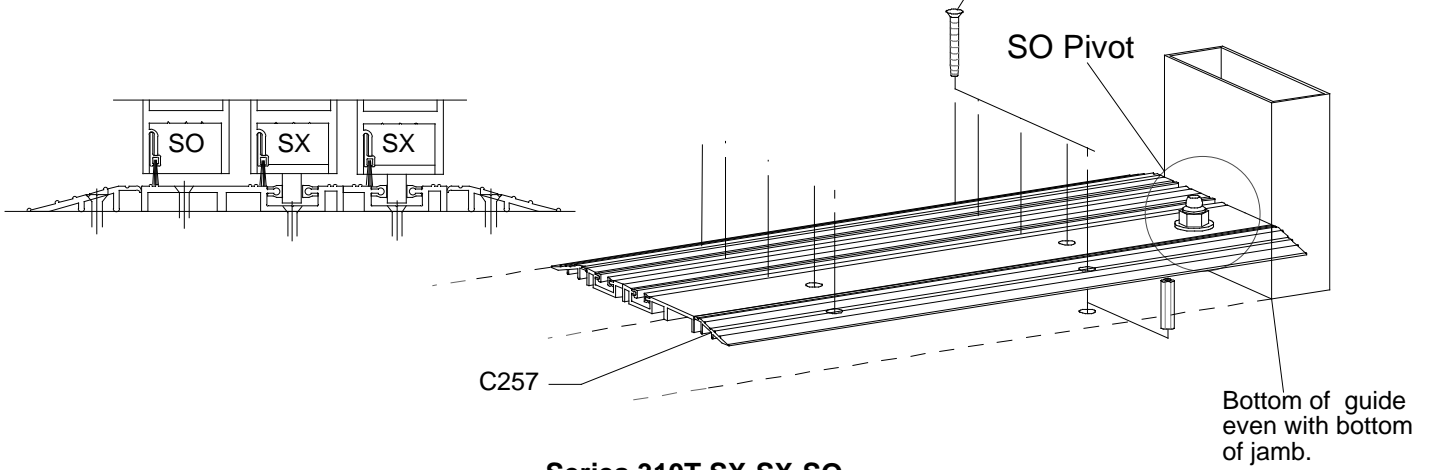
### 4. INSTALLING FLOOR GUIDES

Bottom guides will vary with the unit type. The 3 basic types are shown below.

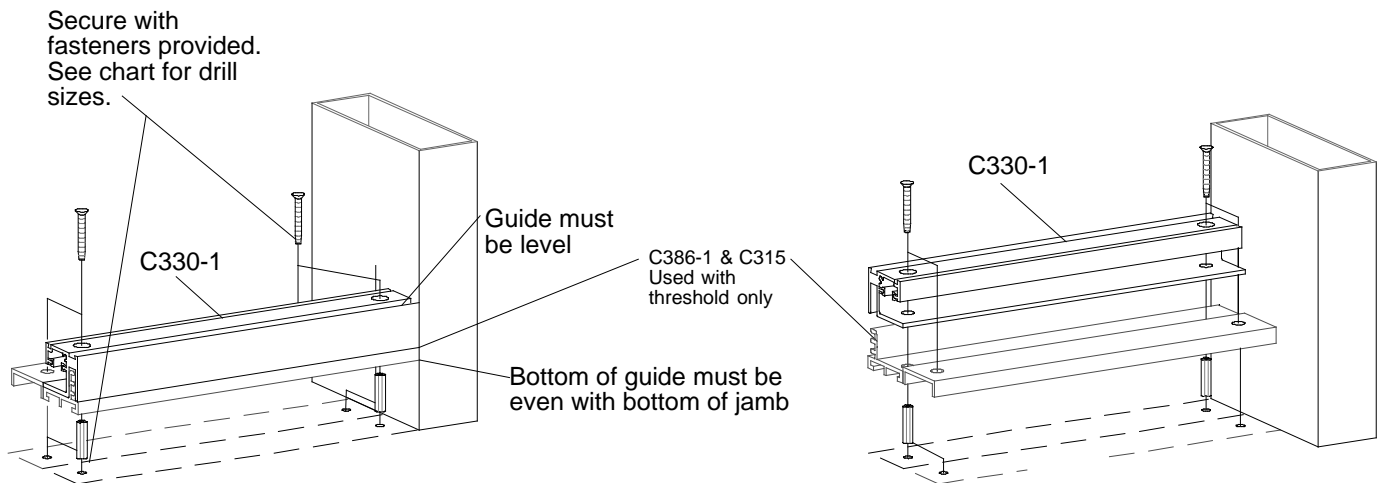
NOTE:  
Jams are not recessed



**Series 310T SX-SX-SO Recessed**



**Series 310T SX-SX-SO Surface mounted**



**Series 010 X-X-O**

**Series 110 SX-X-O**

NOTE:  
ALL VIEWED FROM EXTERIOR SIDE.

## 5. INSTALLING PANELS (SX-SX-SO)

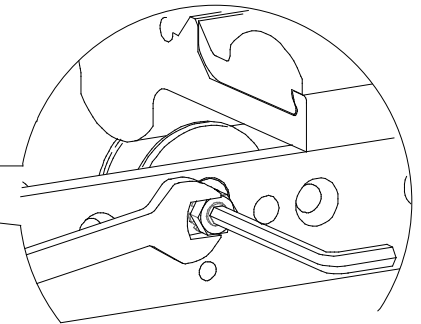
**NOTE:**

The belt and cable connection are factory installed - but are not shown for clarity. (see section 11 for connection details)

**2nd Step**

Secure the door panels to the wheel carriages

WHEEL CARRIAGE ANTI-RISE MUST BE ADJUSTED AFTER THE DOOR PANELS ARE INSTALLED

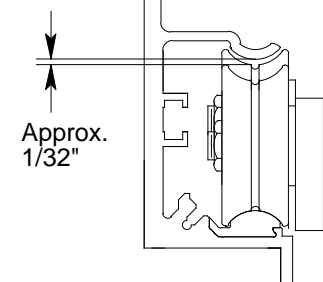


**Anti-rise wheel adjustment**

Loosen 5/16" nut. Rotate allen wrench to raise or lower anti-rise wheel to proper position. Re-tighten nut.

**NOTE:**

Antirise wheel should **NOT** contact the upper track at any point of travel



Approx. 1/32"

**3rd Step**

Adjust door height as required

**INSTALL FIRST**

**INSTALL SECOND**

**NOTE:** Slow door may be broken out to allow the interlocks to engage.

**1st Step**

Place the bottom guides in the track.

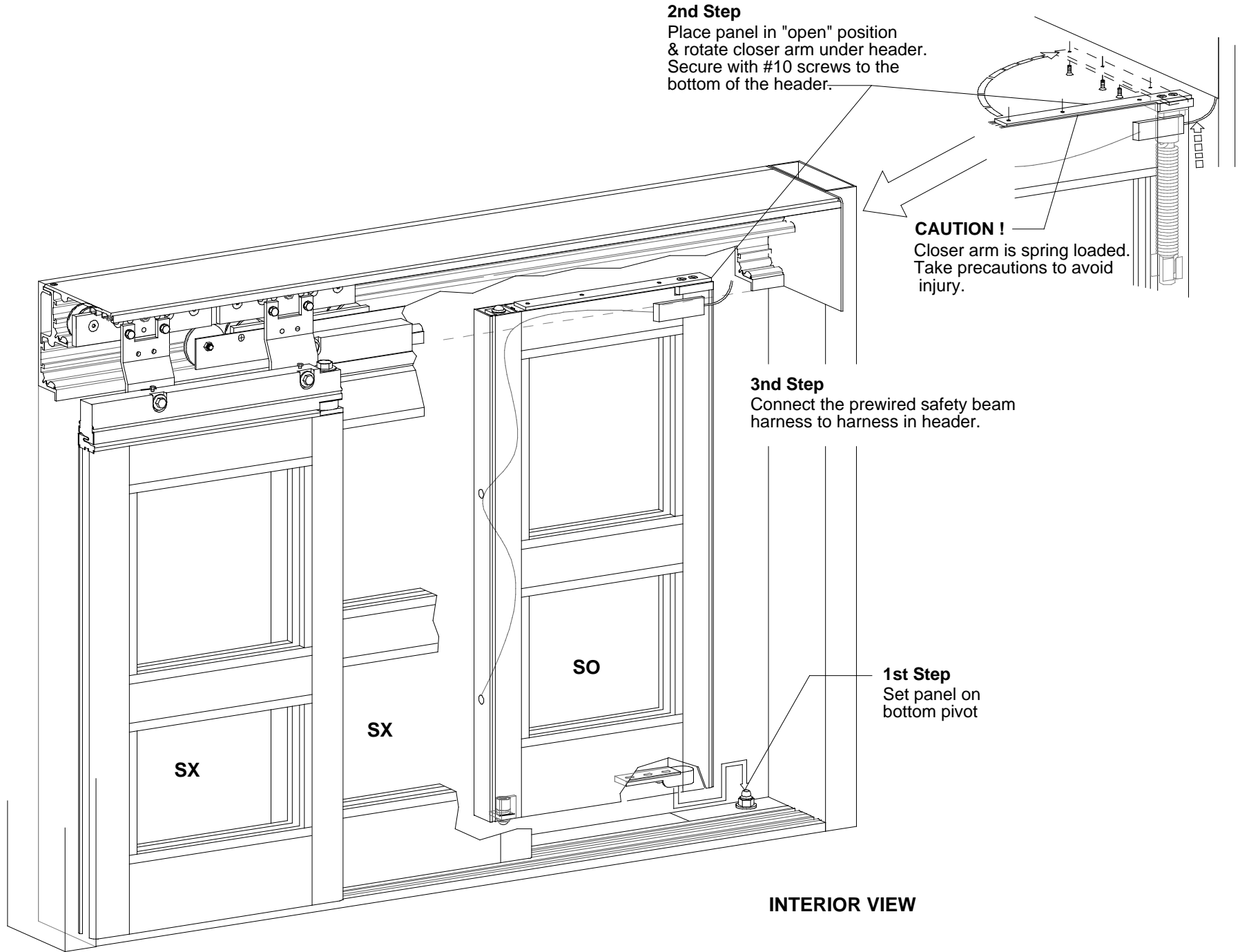
**INTERIOR VIEW**

**SX**

**SX**

G230T.4

## 6. INSTALLING PANELS (SX-SX-SO)



G203T.5

## 7. INSTALLING PANELS (SX-X-O)

**NOTE:**

The belt and cable connection are factory installed - but are not shown for clarity. (see section 11 for connection details)

**4th Step**

Attach the SX panel to the wheel carriages as shown.

**2nd Step**

Connect safety beam wiring harness from door panel to harness in header. Place wire in notch and feed into door panel as unit is tilted into place.

**3rd Step**

Slide panel against the jamb & match drill with #21 (.159) bit thru existing holes into top rail. Secure with #10 screws.

NOTE: there will be a small space between top of panel and bottom of header.

**7th Step**

Attach the X panel to the wheel carriages.

**9th Step**

Adjust the door height as required

**8th Step**

Place end cap on end of track.

**6th Step**

Slide the guide pins into the track.

**5th Step**

Position the X panel on the SX guide pins.

010 EXTERIOR  
110 INTERIOR

Security stud

"O" Panel

C330-1

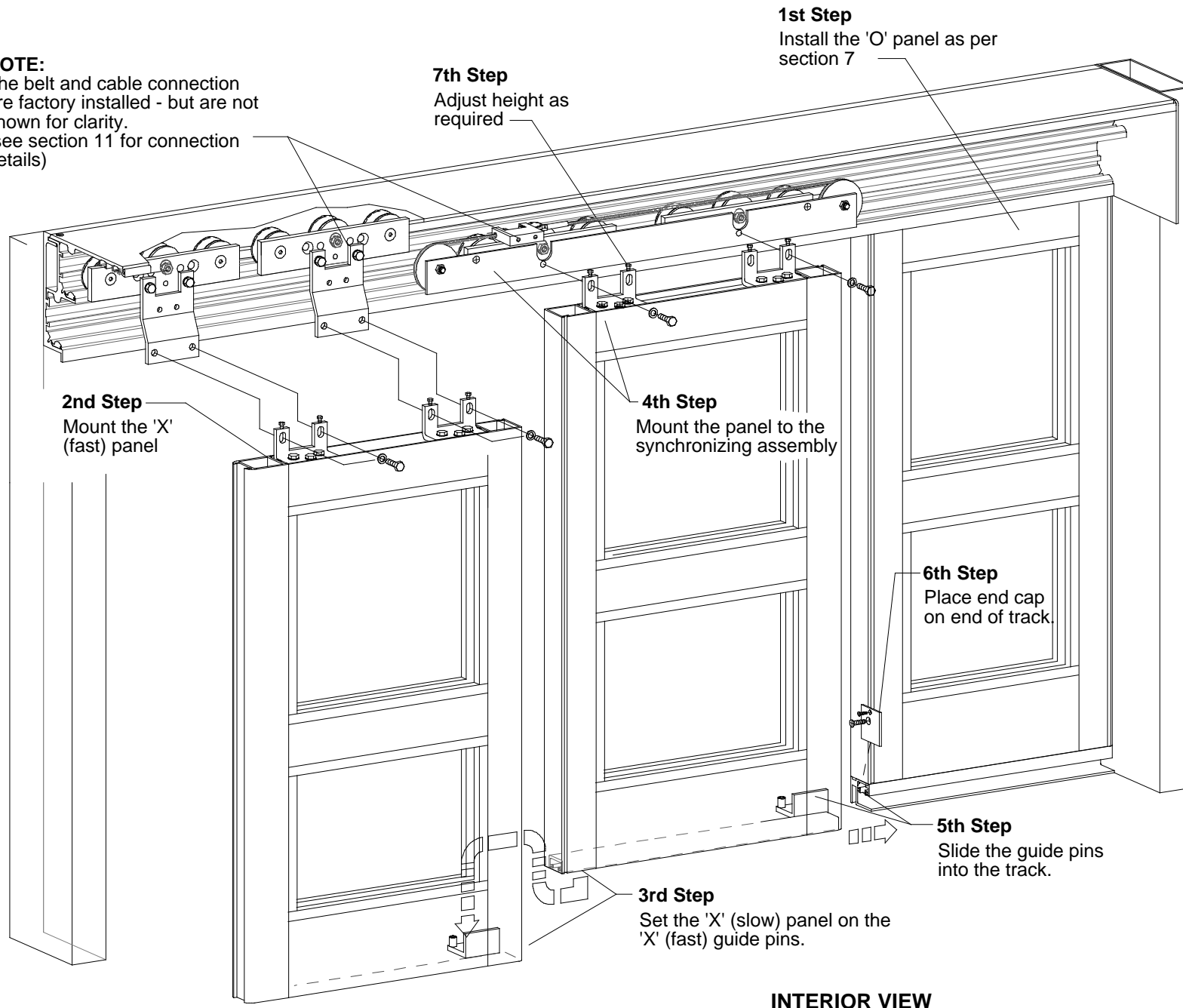
**1st Step**

Position the "O" panel, as shown, in the C330-1 bottom guide about 1" from the jamb to clear security stud.

EXTERIOR VIEW

## 8. INSTALLING PANELS (X-X-O)

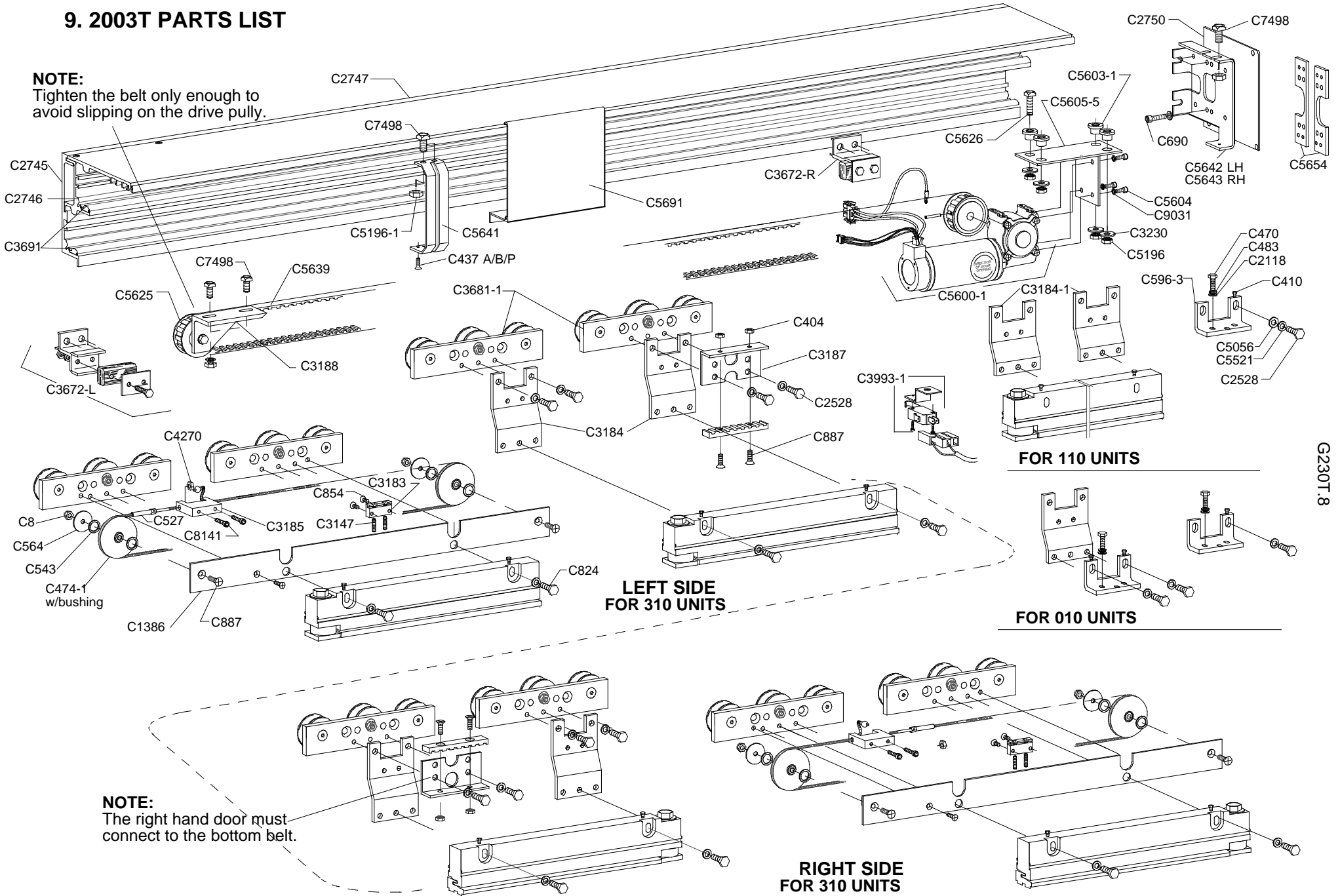
**NOTE:**  
The belt and cable connection are factory installed - but are not shown for clarity.  
(see section 11 for connection details)





# 9. 2003T PARTS LIST

**NOTE:**  
Tighten the belt only enough to avoid slipping on the drive pulley.

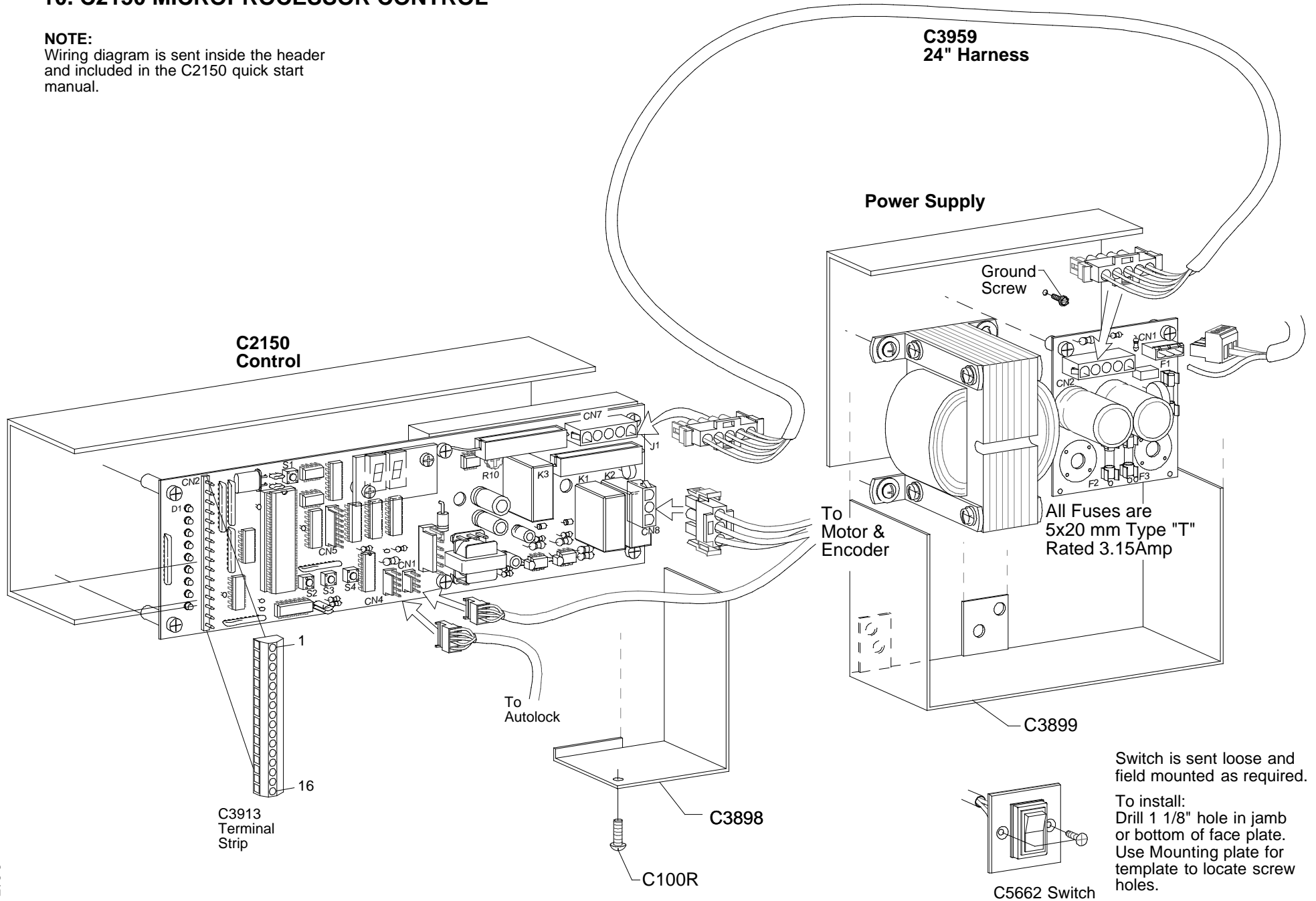


G230T.8

**NOTE:**  
The right hand door must connect to the bottom belt.

# 10. C2150 MICROPROCESSOR CONTROL

**NOTE:**  
Wiring diagram is sent inside the header  
and included in the C2150 quick start  
manual.

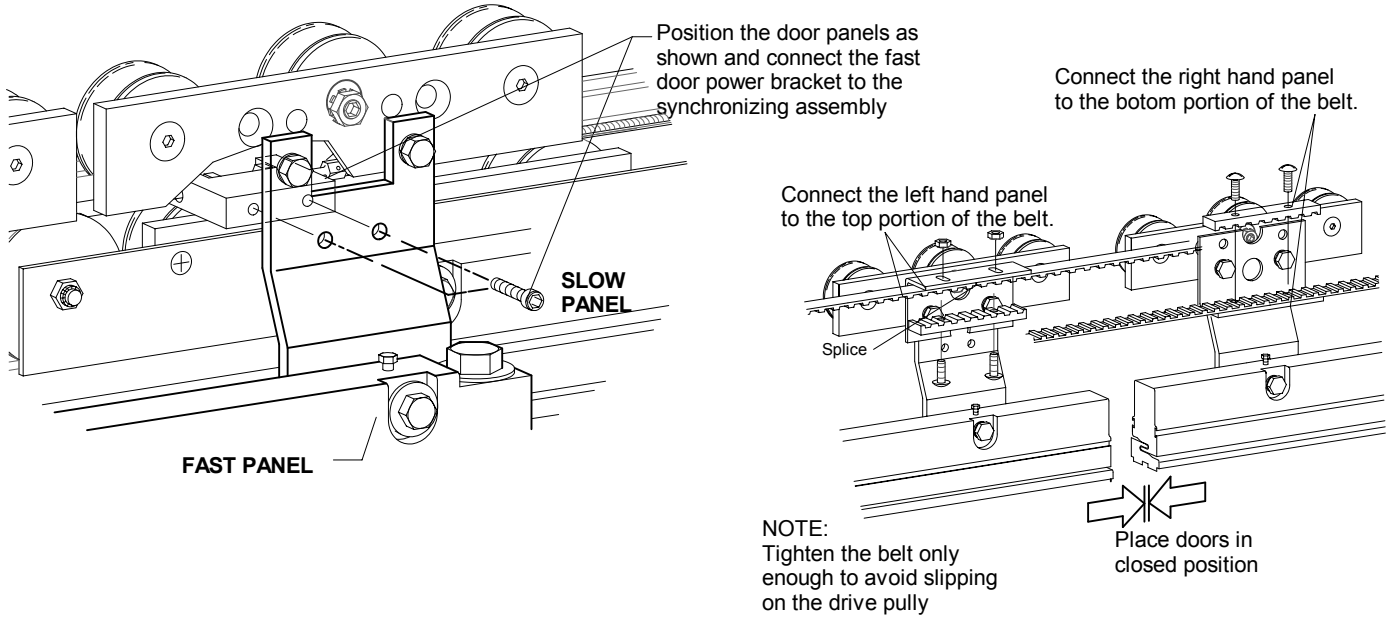


G230T.9

Switch is sent loose and field mounted as required.

To install:  
Drill 1 1/8" hole in jamb or bottom of face plate. Use Mounting plate for template to locate screw holes.

### 11. Belt and cable connection



### 12. ACTIVATING DEVICES

- ¥Activating switches must be located where door operation may be observed by the person actuating it.
- ¥ANSI standard requires a motion detector be placed on each side of the door and be active while the door is open (except the last 6" 150mm of closing). The detector pattern may be reduced to 24"(610) on the control side for one-way traffic.
- ¥Mount sensors on the door header or above at a height of 7ft (2134) to 8ft (2438) from the floor. Sensitivity and detection area may not meet ANSI standards if detector is placed higher.
- ¥Walk test the pattern from various angles and speeds.
- ¥Adjust the sensitivity and pattern of the motion sensor as per ANSI A156.10 See drawing below for pattern and location. See instructions supplied with the sensor.
- NOTE: Never decrease the sensitivity or pattern so it will not detect slow moving traffic.**
- ¥The motion detector time delay should be set to a minimum of two seconds cumulative with C2150 control before the door begins to close. Three seconds or more is recommended by Horton Automatics.

### 13. MOTION SENSOR PREP

