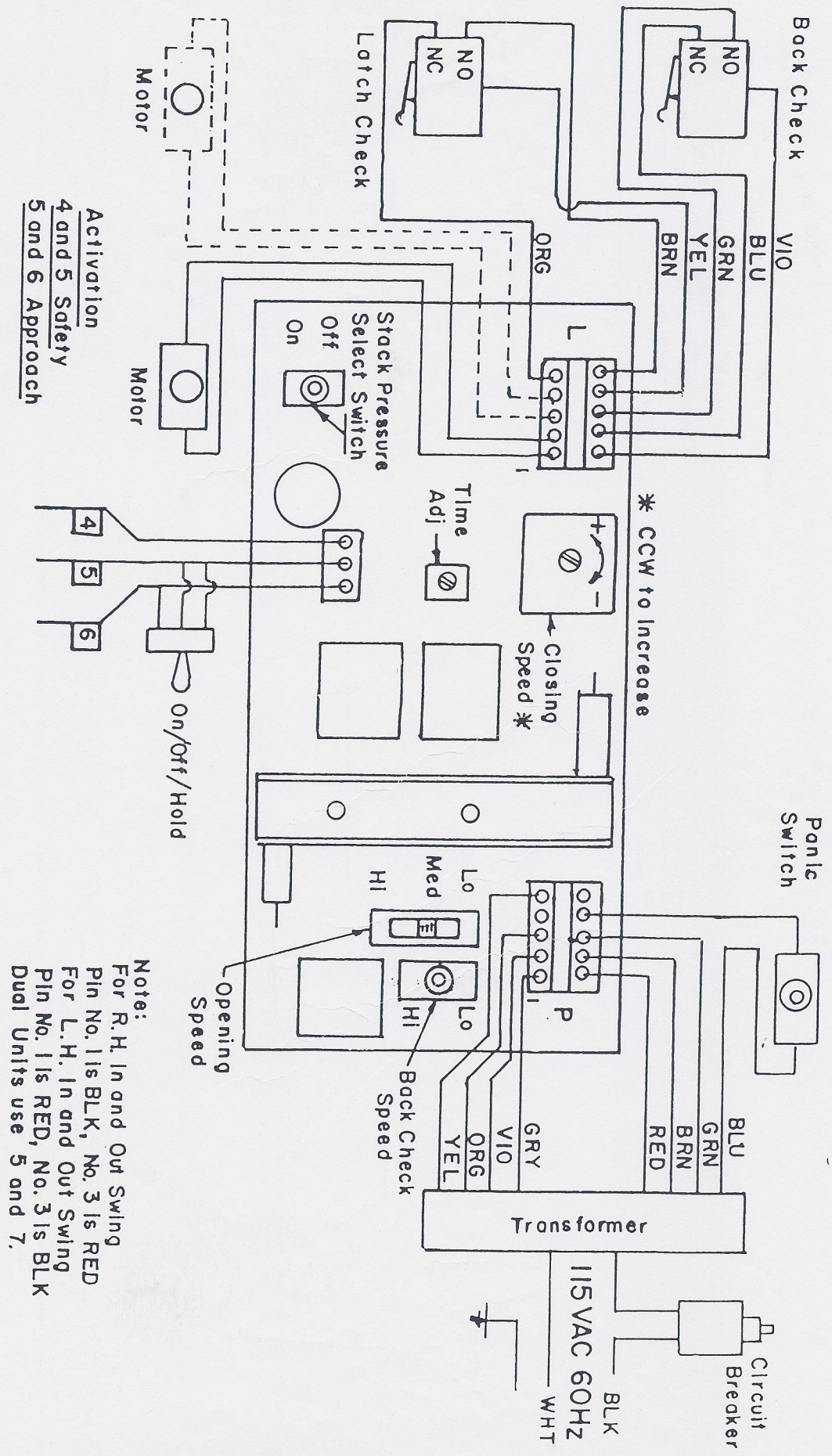


OLD STYLE 3500



Description

Electromechanical Swing Door Control With Stack Pressure

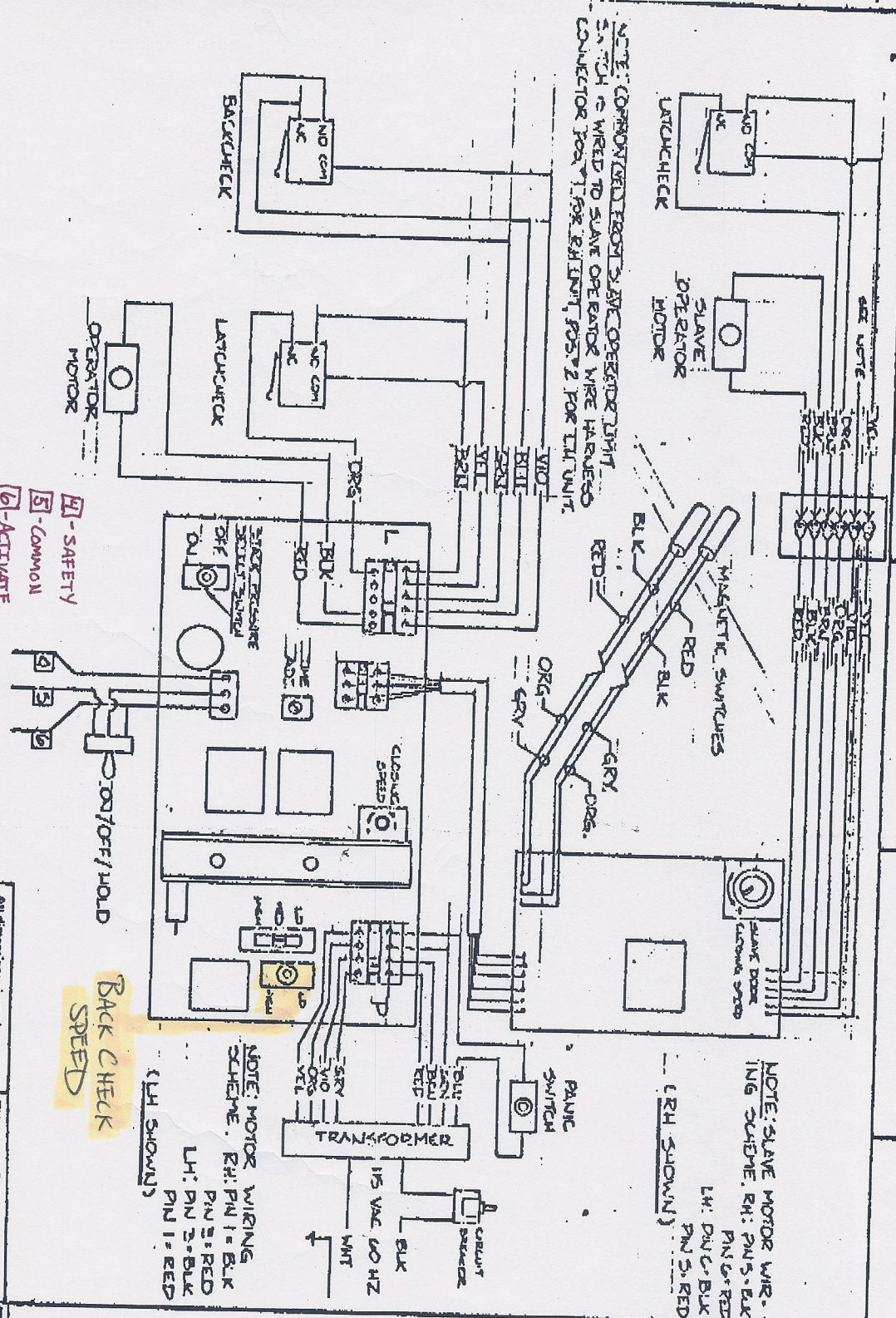
Keane Monroe Corp.
P.O. Box 1071
Monroe, N.C. 28110
Telephone (704)289-5581



Door Control
Products

Template Drawing No
WD 3500

3-25-87



NEW STYLE 3500

NOTICE TO PERSONS RECEIVING THIS DRAWING AND/OR TECHNICAL INFORMATION:
 Keane Mowee Corporation claims proprietary rights in the material disclosed herein. The drawing and/or technical information is not to be reproduced or transmitted in any form or by any means, electronic, mechanical, photocopying, recording, or otherwise, without the prior written permission of Keane Mowee Corporation. The drawing and/or technical information is the property of Keane Mowee Corporation and is loaned to you for your use only. It is to be returned to Keane Mowee Corporation upon completion of your project.

DO NOT SCALE DRAWING
 REMOVE ALL BURRS
 Unspecified tolerances
 ±.0007 ± 0.25mm
 Length = 0.30
 Inch (millimeter) : Inch (millimeter)

All dimensions given about centerlines must be centered within tolerance unless otherwise specified.

Third Angle Projection System

Scale: NTS
 Date: 4/2/85
 Draft: BH
 Check: []
 Engr: []
 Appd: []

Product Name: SERIES 3500
 WIRING DIAGRAM
 Part Name: 44-3500-9000
 Keane Mowee Corporation
 P.O. Box 1071
 Monroe, North Carolina 28110

1 2 3 4 5 6