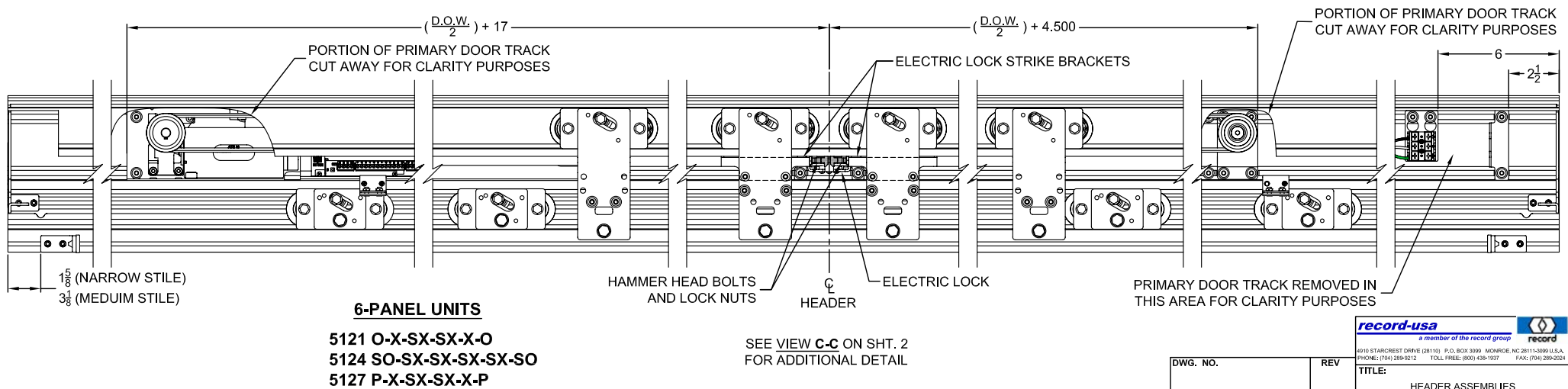
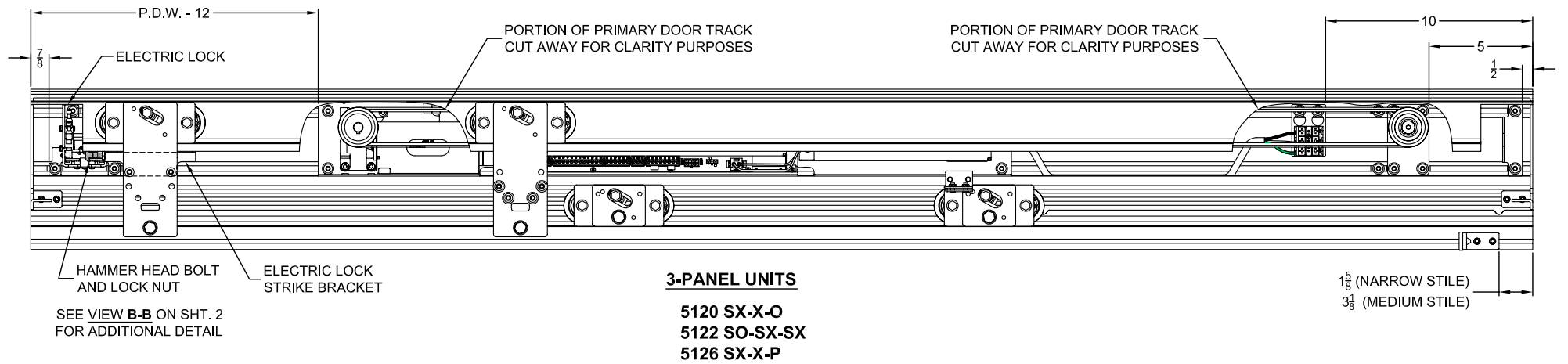
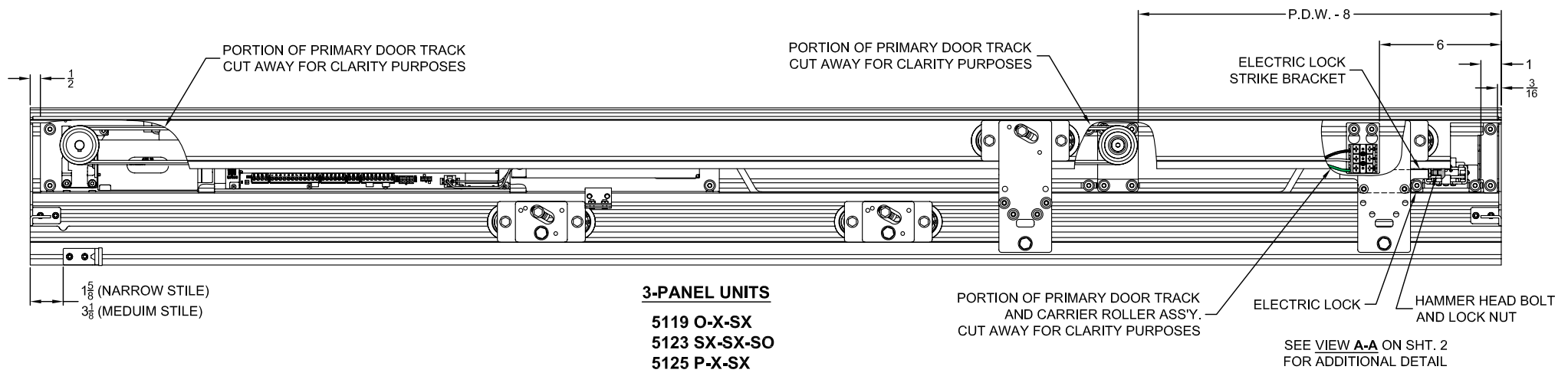
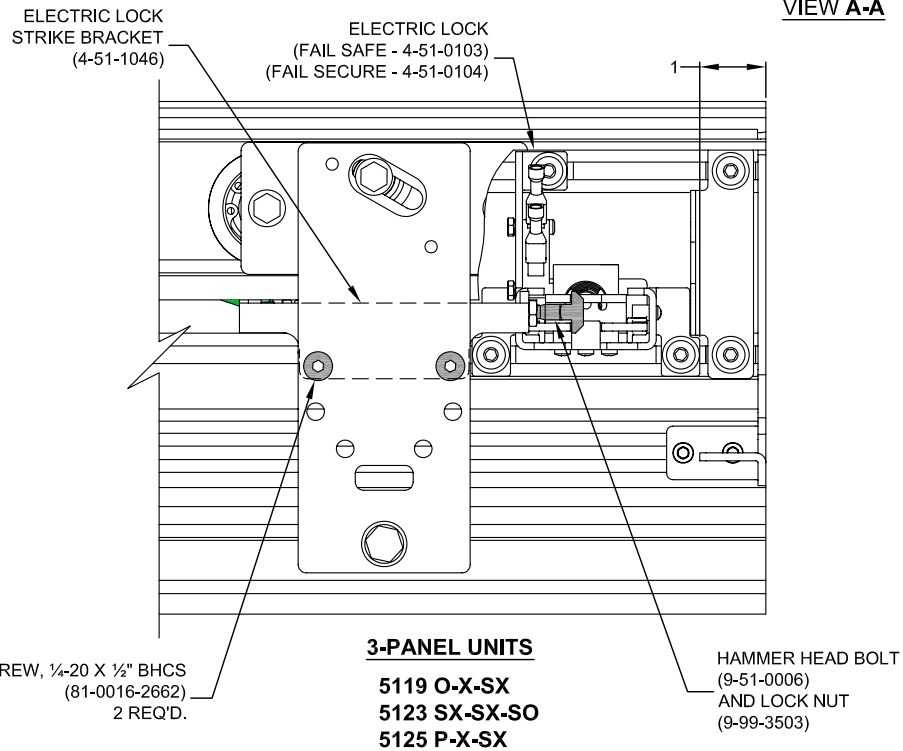


BIPART UNITS

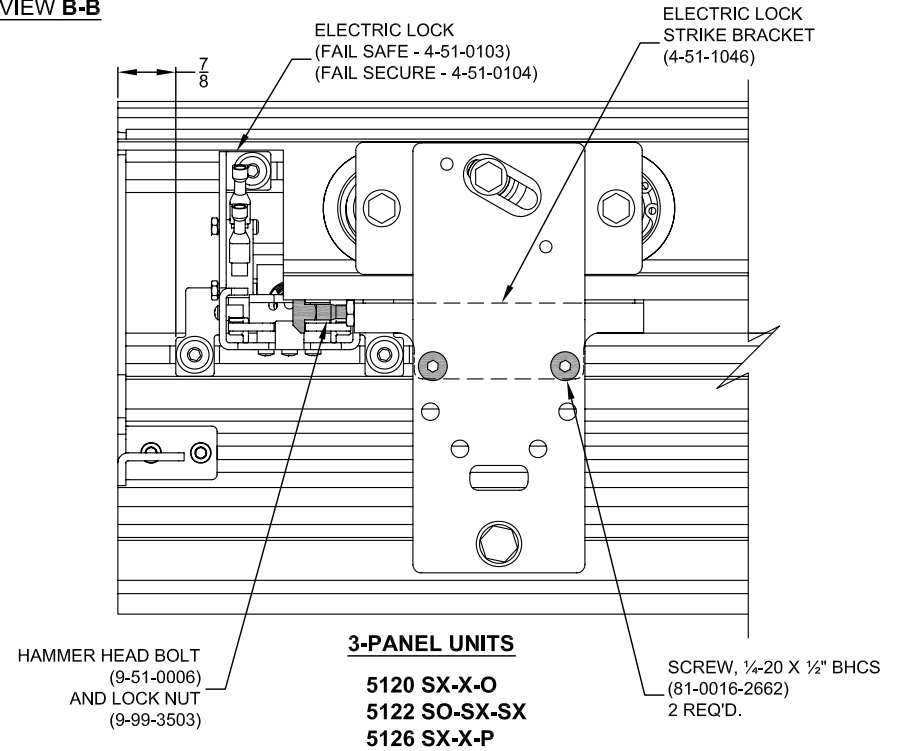
5103 O-SX-SX-O	5112 SO/SO-SX-SX-SO/SO
5106 SO-SX-SX-SO	5115 P/SO-SX-SX-SO/P
5109 P-SX-SX-P	5118 P-SX-SX-P (R.B.O.)



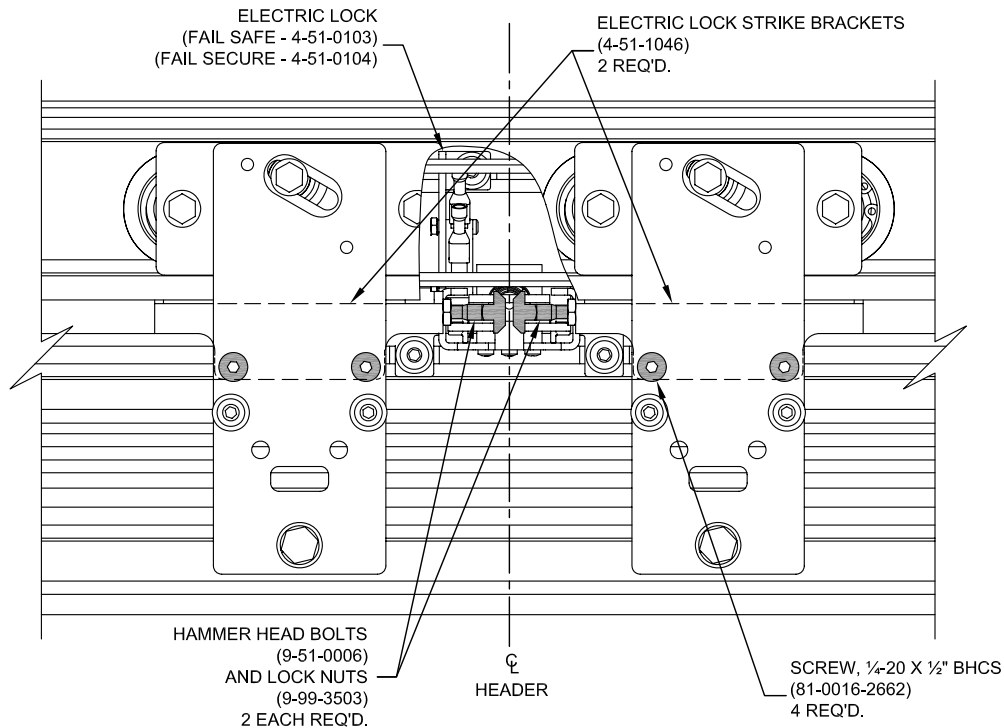
VIEW A-A



VIEW B-B

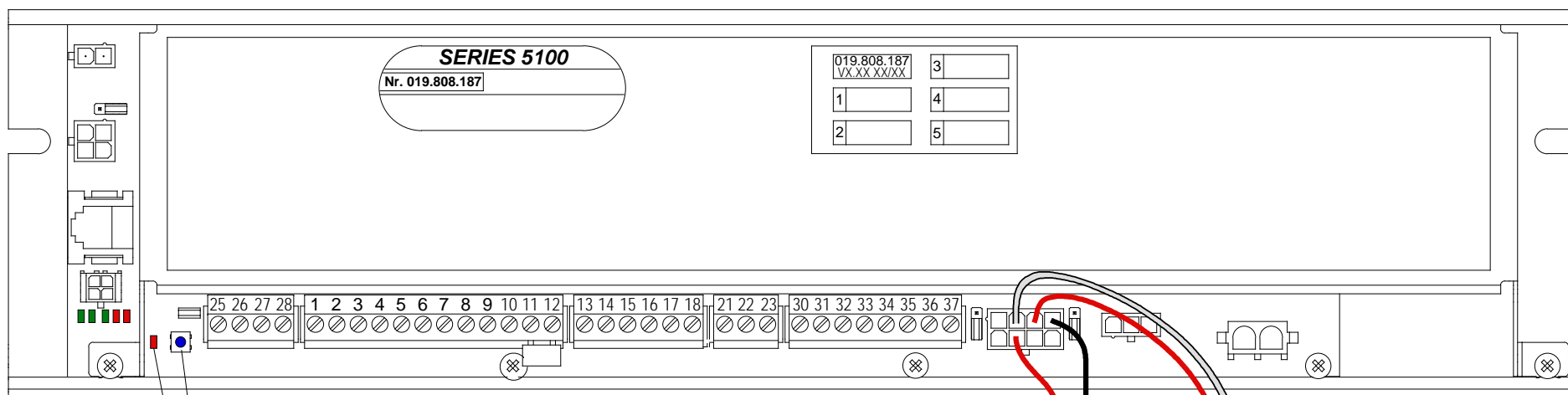


VIEW C-C






6-PANEL UNITS

5121 O-X-SX-SX-X-O
5124 SO-SX-SX-SX-SX-SO
5127 P-X-SX-SX-X-P

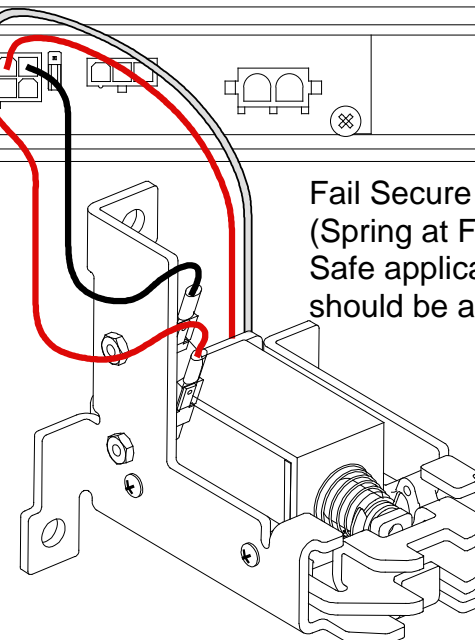



Control LED
Control Switch


Connect the automatic lock to its dedicated connector on the door control as shown at right. Install the lock in the header, mount the lock bracket(s) complete with hammer-head bolts on the top wheel carriage assemblies, and mechanically adjust for proper clearances and operation.


Press and hold the blue Control Switch for 4 flashes of the red Control LED, then release. The first screen at right should appear on the jamb-mounted Display Control Panel. Scroll down (using the AUTO/+ key) to "Locking" and select it using the  key; select "Lock Function", then scroll down and select (using the  key) the desired function - "Night Locked", "1Way Locked", or "Always Locked". Press the "PROG" key once, then scroll down and select "Lock Type". Scroll down to and select the appropriate lock type - "Fail Secure" or "Fail Safe". Press the "PROG" key multiple times until the panel displays "Quit Menu?", then press the  key to return to normal operating mode control.

Fail Secure Lock shown
(Spring at Front); for Fail
Safe applications - spring
should be at back of lock.



Parameter 
☒ Driving cycle
☐ Time delay open
☐ Drive

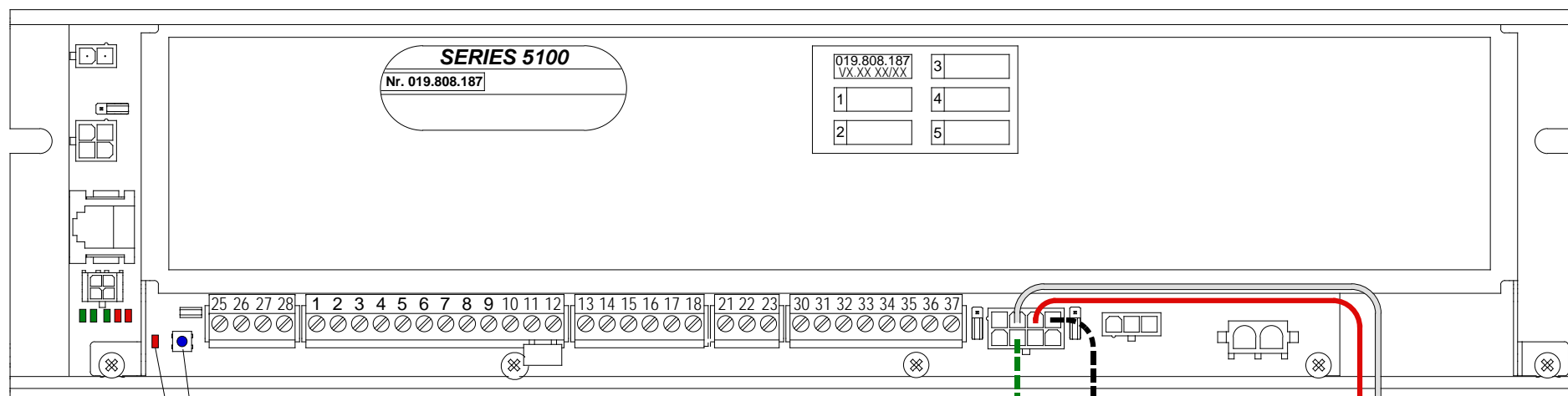
Parameter 
☐ Entrance system
☐ Control panel
☒ Locking

Locking 
☒ Lock Function
☐ Lock Type

Lock Function 
☒ Night Locked
☐ 1Way Locked
☐ Always Locked

Lock Type 
☐ Magnet
☒ Fail Secure
☐ Fail Safe

Series 5100 - Configuring Automatic Locks



Control LED
Control Switch

Using the enclosed harness, connect the automatic lock to the dedicated connector on the door control as shown. White +30VDC, 0.3A max.; Red 0VDC; Black & Green - Optional Lock Monitor Switch. If the monitor switch is not used, the Lock Type selected below must be "Magnet".

Press and hold the blue Control Switch for 4 flashes of the red Control LED, then release. The first screen at right should appear on the jamb-mounted Display Control Panel. Scroll down (using the AUTO/+ key) to "Locking" and select it using the key; select "Lock Function", then scroll down and select (using the key) the desired function - "Night Locked", "1Way Locked", or "Always Locked". Press the "PROG" key once, then scroll down and select "Lock Type". Scroll down to and select the appropriate lock type - "Magnet", "Fail Secure" or "Fail Safe". Fail Secure and Fail Safe lock types require a lock monitor switch. "Magnet" and "Fail Safe" types have power applied to lock the door. "Fail Secure" locks have power applied to unlock.

To exit the programming mode, press the "PROG" key multiple times until the panel displays "Quit Menu?", then press the key to return to normal operating mode control.

Optional Lock
Monitor Switch
Contacts closed
when locked

30VDC, 0.3A max.

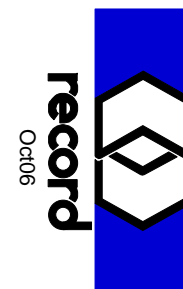
Parameter
Driving cycle
Time delay open
Drive

Parameter
Entrance system
Control panel
Locking

Locking
Lock Function
Lock Type

Lock Function
☐ Night Locked
☐ 1Way Locked
☒ Always Locked

Lock Type
☒ Magnet
☐ Fail Secure
☐ Fail Safe



Series 5100 - Automatic Lock by Others