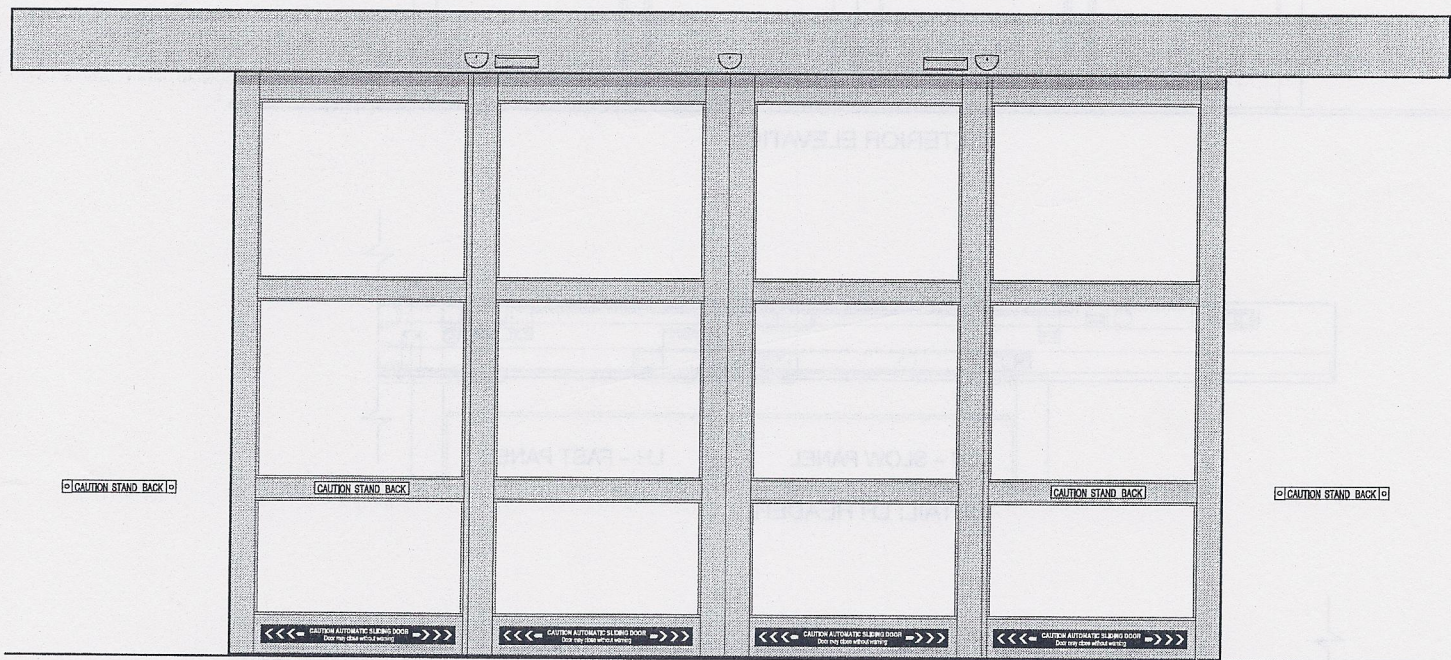


# **STANLEY** Access Technologies

## **INDUSTRIAL SLIDER IS10000**

### **Installation Instructions - Tune-In**



#### **Prohibition on Copying**

Any unauthorized reproduction, disclosure or distribution of copies by any person of any portion of this work may be a violation of copyright law of the United States of America and other countries, could result in the awarding of statutory damages of up to \$250,000 (17 USC 504) for infringement, and may result in further civil and criminal penalties. All rights reserved.

203913

Rev. C 11/12/04



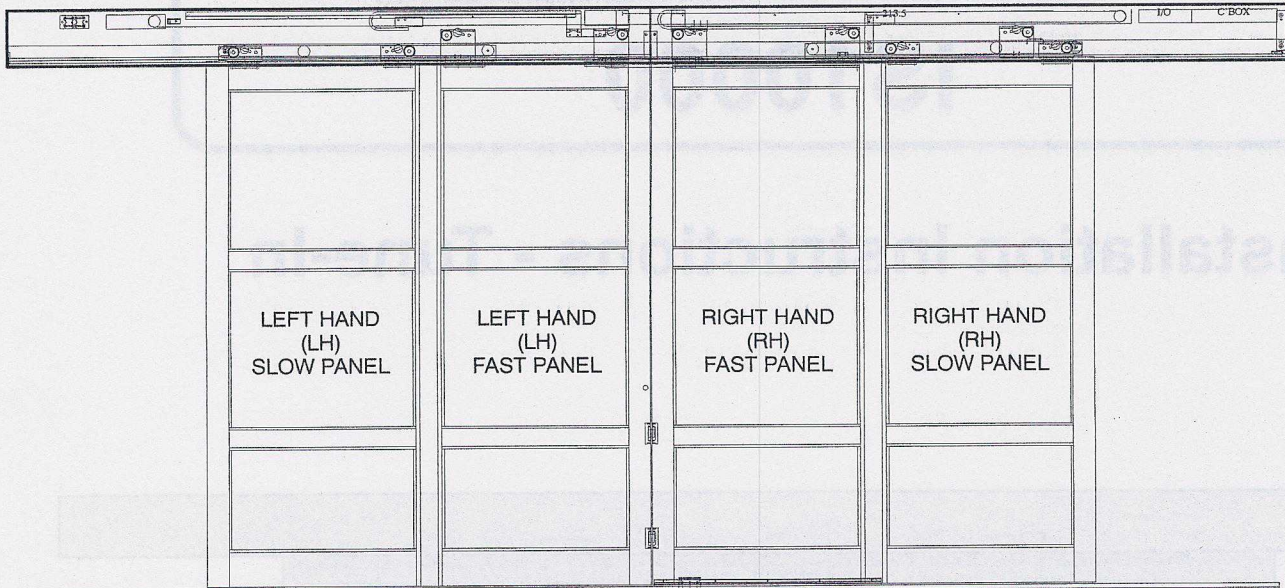
## BEFORE BEGINNING:

**CAUTION:** Be sure to follow instructions specific to building construction where noted.

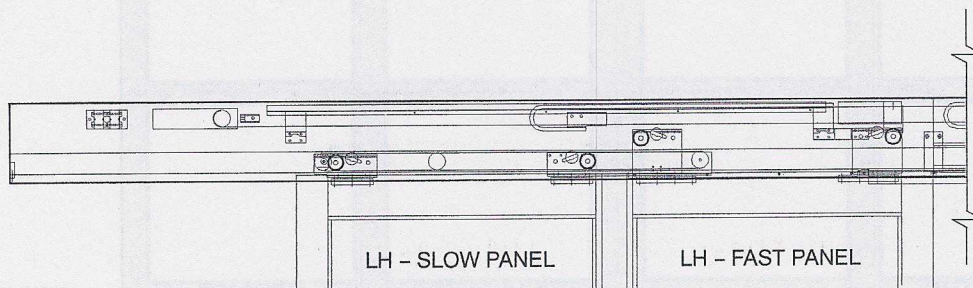
**IMPORTANT:** Use a surveyor's transit to locate header mounting holes as well as an easier way to level and locate the guide track.

**Refer to the Packing List at the end of this instruction manual to identify all necessary parts. Be sure all parts are included before proceeding.**

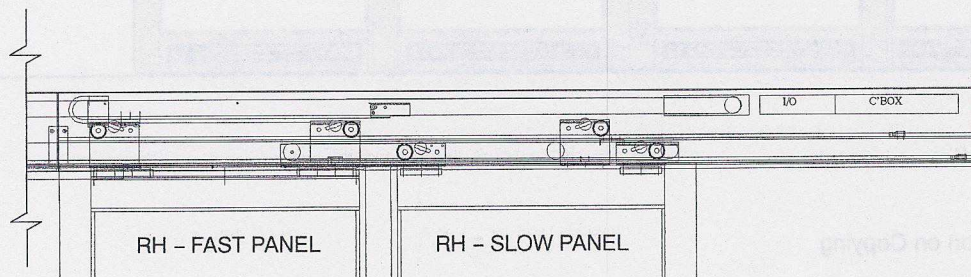
FOR DETAIL OF HEADER PARTS, SEE BELOW.



EXTERIOR ELEVATION



DETAIL: LH HEADER

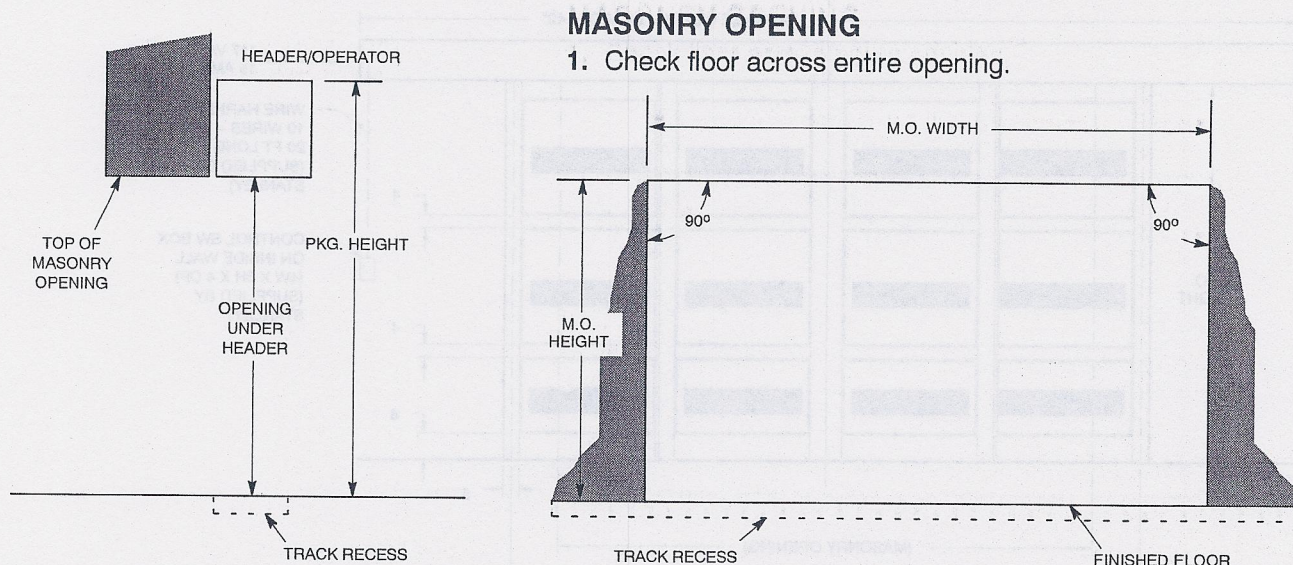


DETAIL: RH HEADER

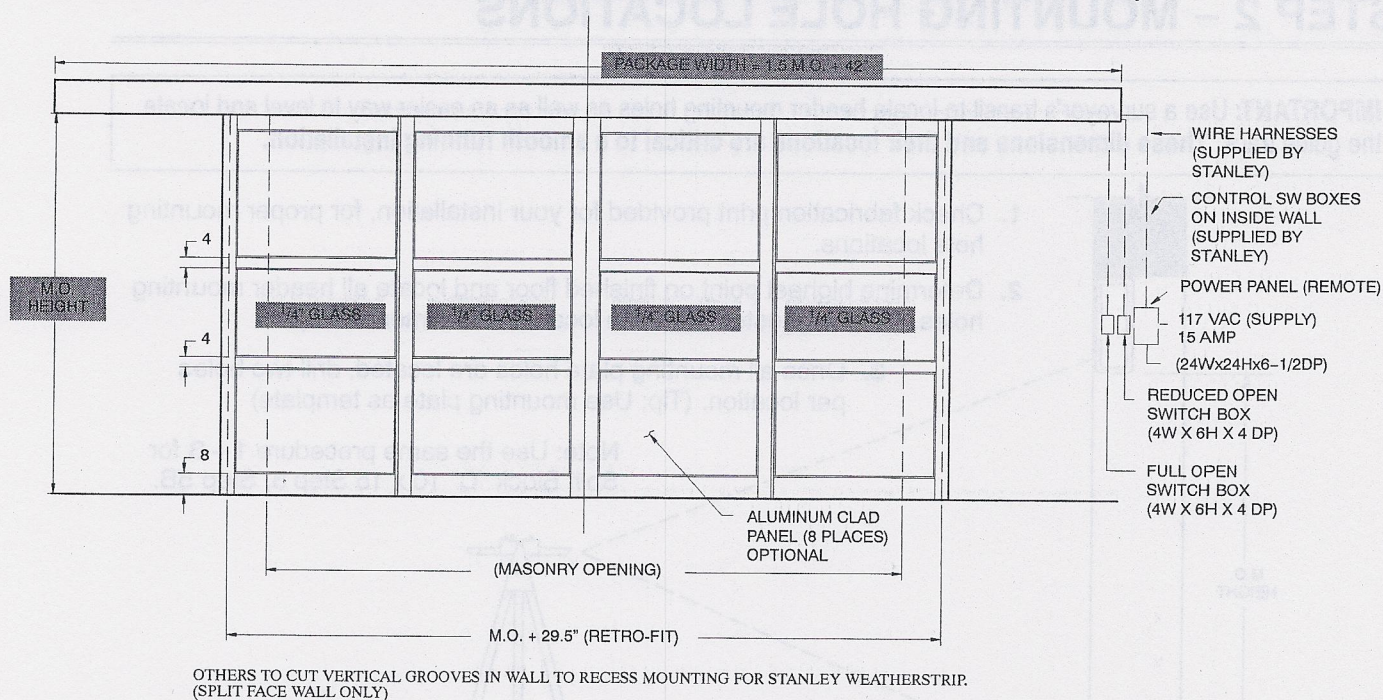


## STEP 1 – AREA PREPARATION

**IMPORTANT:** Use a surveyor's transit to locate header mounting holes as well as an easier way to level and locate the guide track. *These dimensions and their locations are critical to a smooth running installation.*



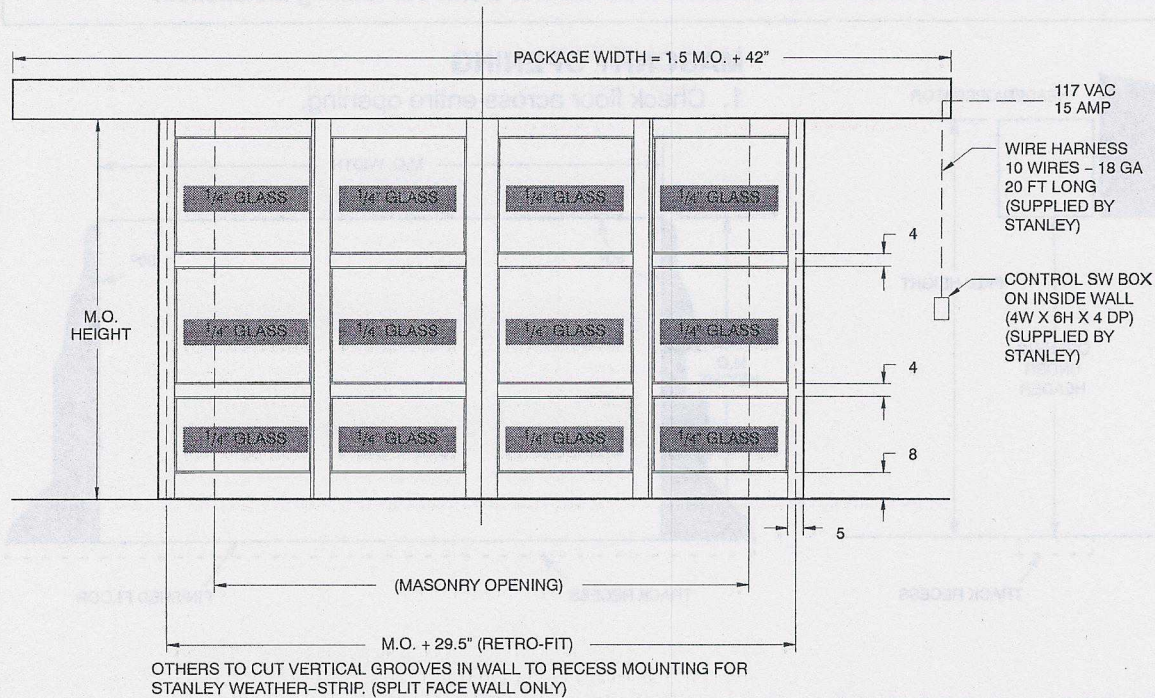
### MASONRY OPENING FOR TYPE WITH EXTERNAL ELECTRONICS (i.e. CONTROL BOX, I/O BOARD MOUNTED EXTERNALLY IN POWER PANEL)





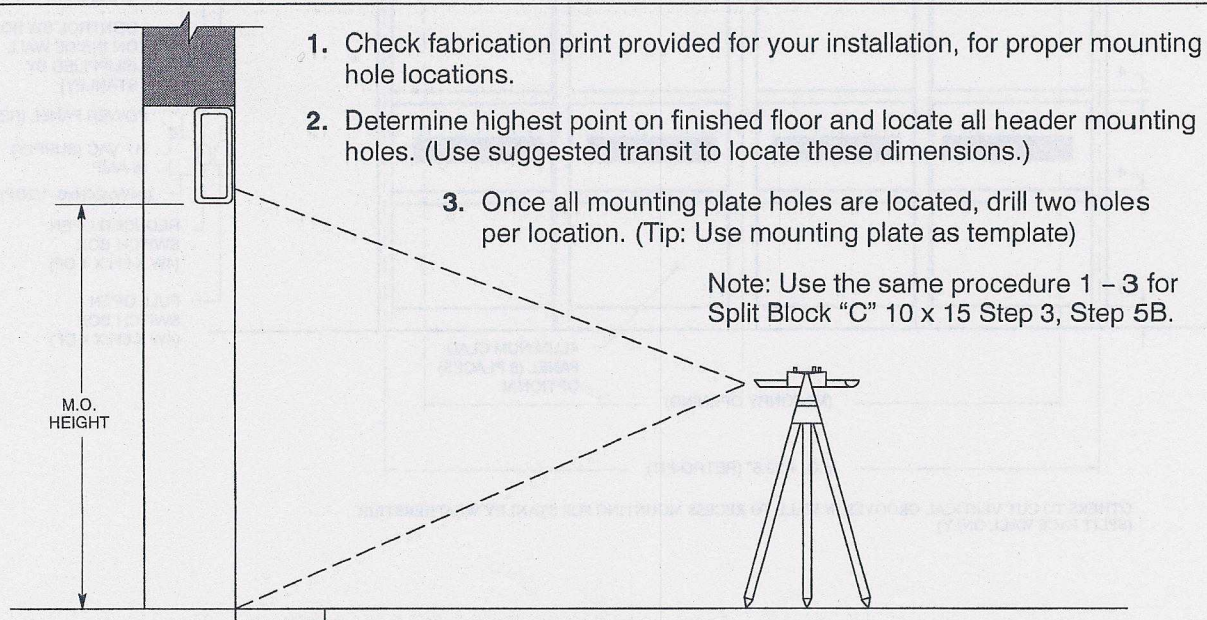
## STEP 1 – AREA PREPARATION (Cont'd)

### MASONRY OPENING FOR TYPE WITH INTERNAL ELECTRONICS (i.e. CONTROL BOX, I/O MOUNTED IN HEADER)



## STEP 2 – MOUNTING HOLE LOCATIONS

**IMPORTANT:** Use a surveyor's transit to locate header mounting holes as well as an easier way to level and locate the guide track. These dimensions and their locations are critical to a smooth running installation.

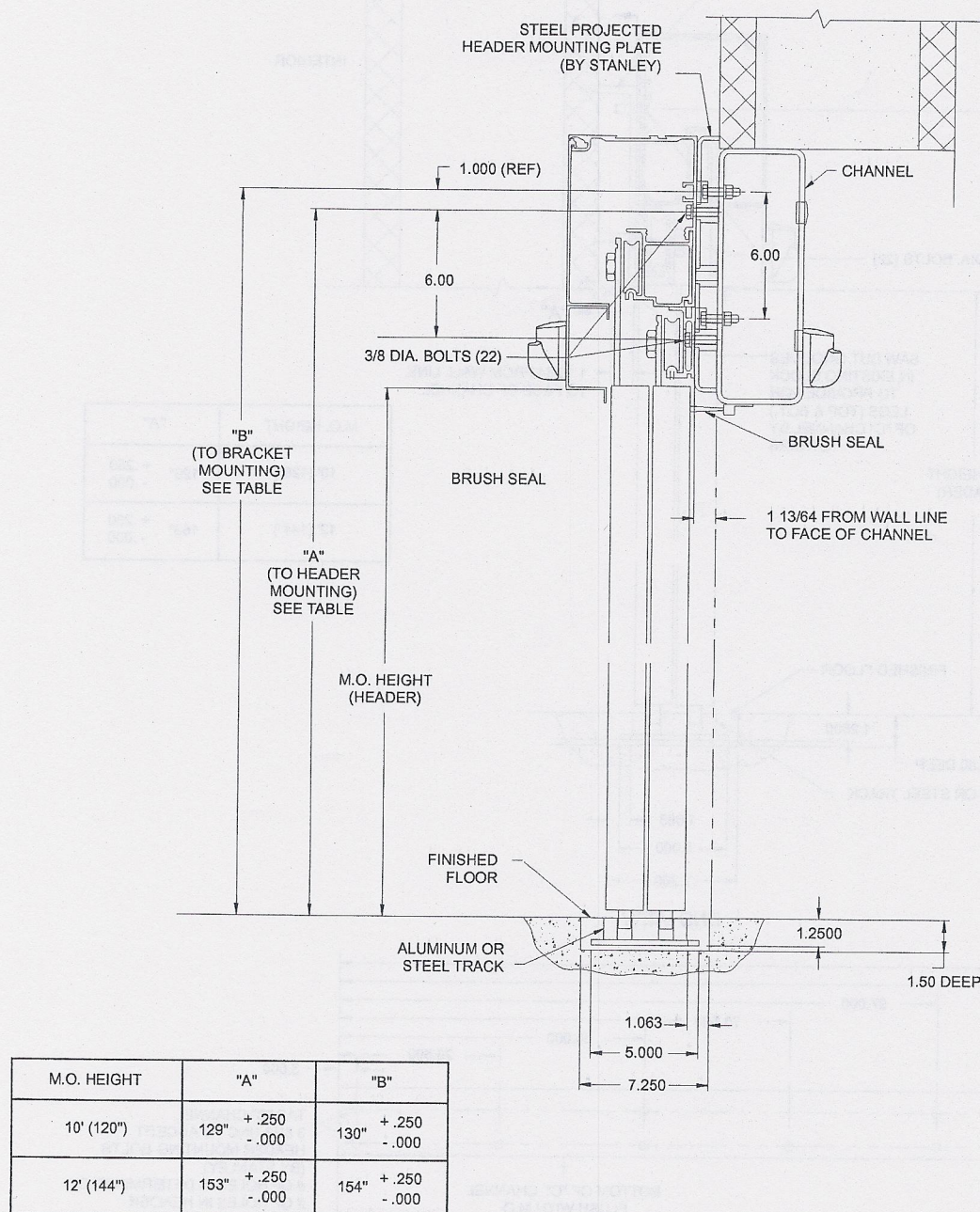




## STEP 3 - IDENTIFY CONSTRUCTION APPLICATION

**FOR SMOOTH FACE & NEW CONSTRUCTION WALLS:**  
REFER TO ILLUSTRATION BELOW AND PROCEED TO STEP 4.

**FOR SPLIT FACE BLOCK WALLS:**  
REFER TO ILLUSTRATION ON PAGE 5 AND PROCEED TO STEP 5B.

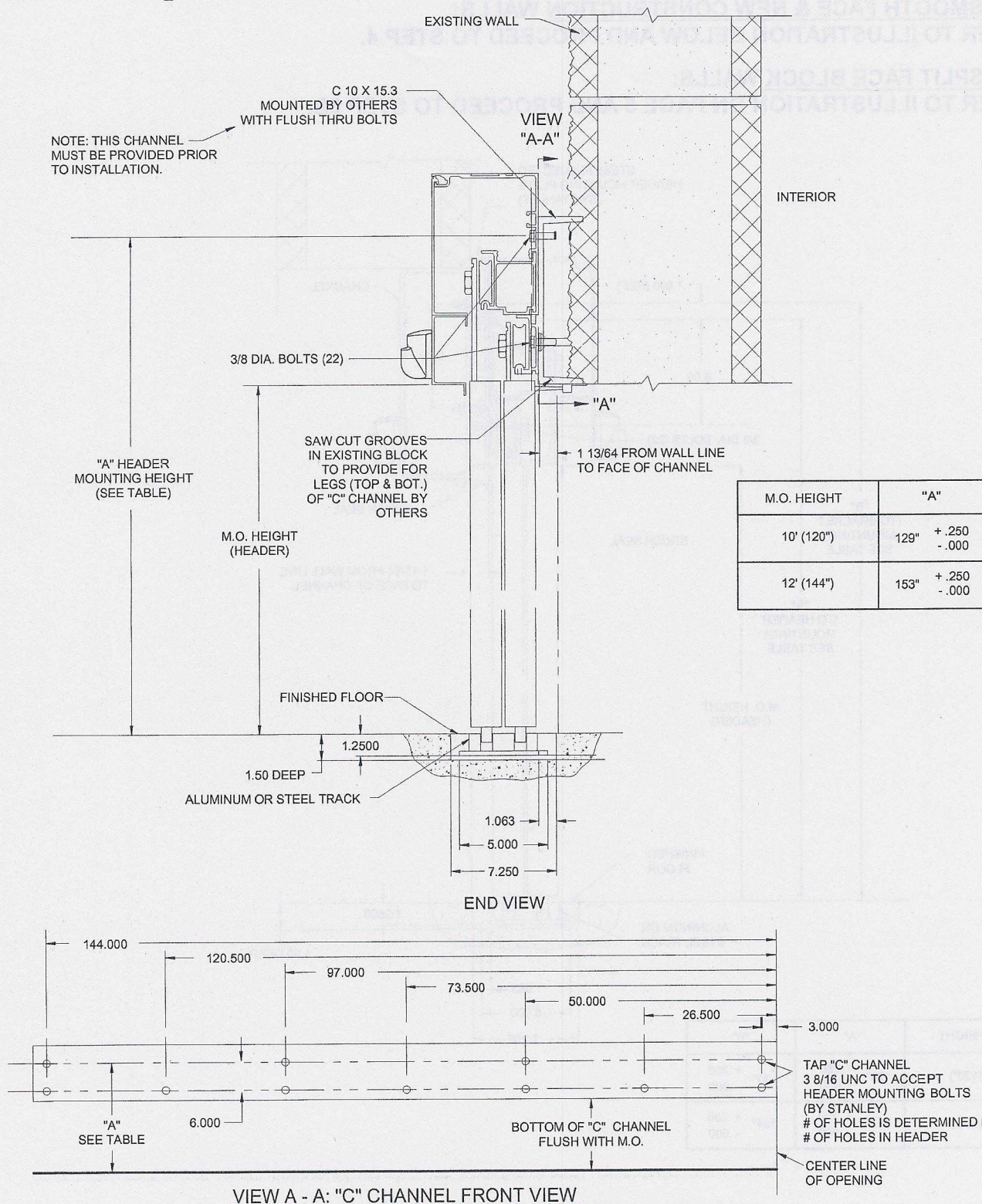


### SMOOTH FACE & NEW CONSTRUCTION

END VIEW



# STEP 3 - IDENTIFY CONSTRUCTION APPLICATION



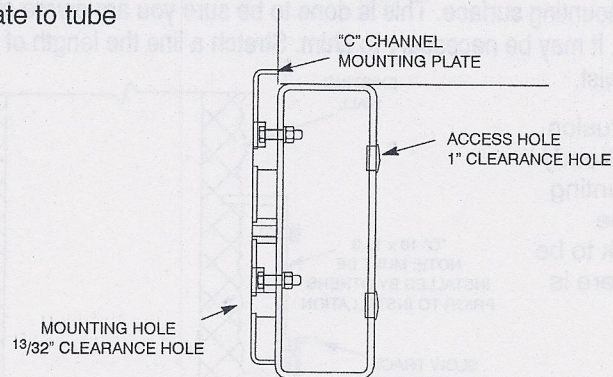
## SPLIT FACE BLOCK



## STEP 4 – ATTACH “C” CHANNEL MOUNTING PLATE

**NOTE: FOR SMOOTH FACE & NEW CONSTRUCTION WALLS ONLY**  
(For Split Face Block Walls see Step 5B)

1. Secure “C” channel mounting plate to tube as shown with screws provided.
2. Proceed to Step 5A.

**Parts Required:**

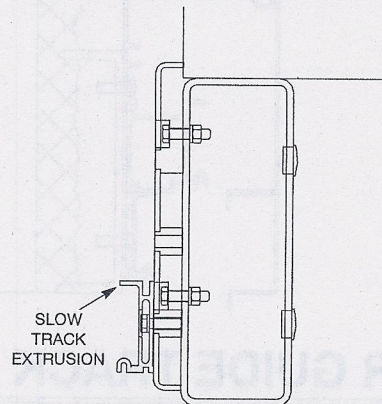
“C” Channel  
(Header)  
Mounting Plate  
111508 (Qty. 2)

## STEP 5A – MOUNT TRACK & HEADER

**NOTE: FOR SMOOTH FACE & NEW CONSTRUCTION WALLS ONLY**  
(For Split Face Block Walls see Step 5B)

**CAUTION:** Secure track to mounting surface. This is done to be sure you are aware of any twists or bows in the surface. It may be necessary to shim. Stretch a line the length of the header to check for bow or twist.

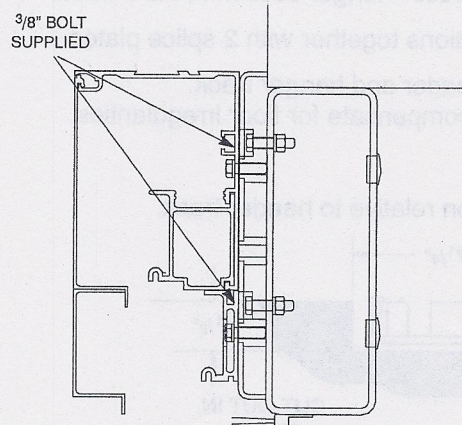
1. Position slow track extrusion on mounting channel. Holes are already provided in channel for track mounting. It may be necessary to shim track to be sure it runs true and there is no twist.

**Parts Required:**

Installation Kit  
516413

Track Extrusion  
516378

2. Position header above slow track on the mounting channel. All mounting holes are provided in the channel. Use fasteners provided.
3. Proceed to Step 6.

**Parts Required:**

Header Assy  
111497 – Int. Elect.  
OR  
111501 – Ext. Elect.



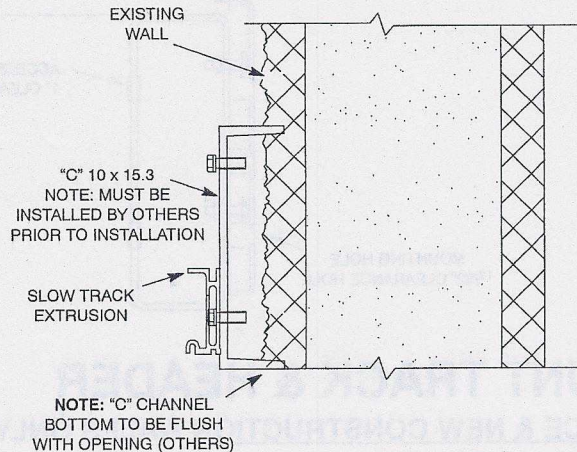
## STEP 5B – MOUNT TRACK & HEADER

**NOTE: FOR SPLIT FACE BLOCK WALLS ONLY**

(For Smooth & New Construction Walls see Step 5A)

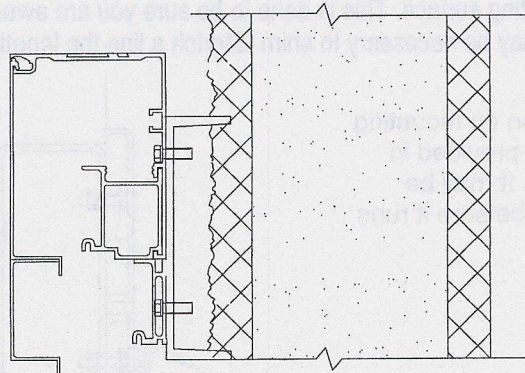
**CAUTION:** Secure track to mounting surface. This is done to be sure you are aware of any twists or bows in the surface. It may be necessary to shim. Stretch a line the length of the header to check for bow or twist.

1. Position slow track extrusion on mounting channel already located per Step 2 mounting hole locations. It may be necessary to shim track to be sure it runs true and there is no twist.



2. Position header above track on the mounting channel. Refer to View A-A in Step 3 Split Face Block for tapped hole locations in "C" channel. Use fasteners provided.

3. Proceed to Step 6.



### Parts Required:

Installation Kit  
516413

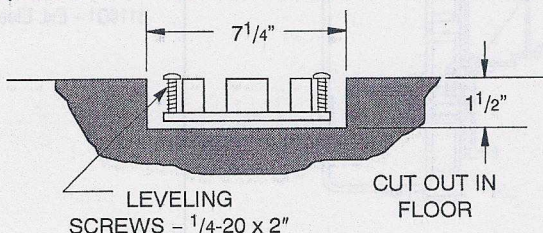
Track Extrusion  
516378

### Parts Required:

Header Assy  
111497 – Int. Elect.  
OR  
111501 – Ext. Elect.

## STEP 6 – FLOOR GUIDE TRACK

1. Position floor track in recess – longer section in the middle.
2. Attach 3 piece track sections together with 2 splice plates.
3. Level track relative to header and hanger track.  
Use leveling screws to compensate for floor irregularities.
4. Use transit for leveling.
5. Use plum bob for location relative to header track.



### Parts Required:

Track, 3 Sections  
(when viewing door  
from outside):  
111726 (Qty. 3)

Splice Plate  
413289 (Qty. 2)

1/4-20 x 2"  
Pan-Head Screws  
315438499 (Qty. 18)

1/4-20 x 3/4"  
Pan-Head Screws  
315431960 (Qty. 8)



## STEP 7 - DOOR PREPARATION - SLOW PANEL

**Parts Required:**

Hanger Package  
516394

Shims - Per Panel:  
413341 (Qty. 4) - 1/8"

Spacers - Per Panel:  
413600 (Qty. 2)

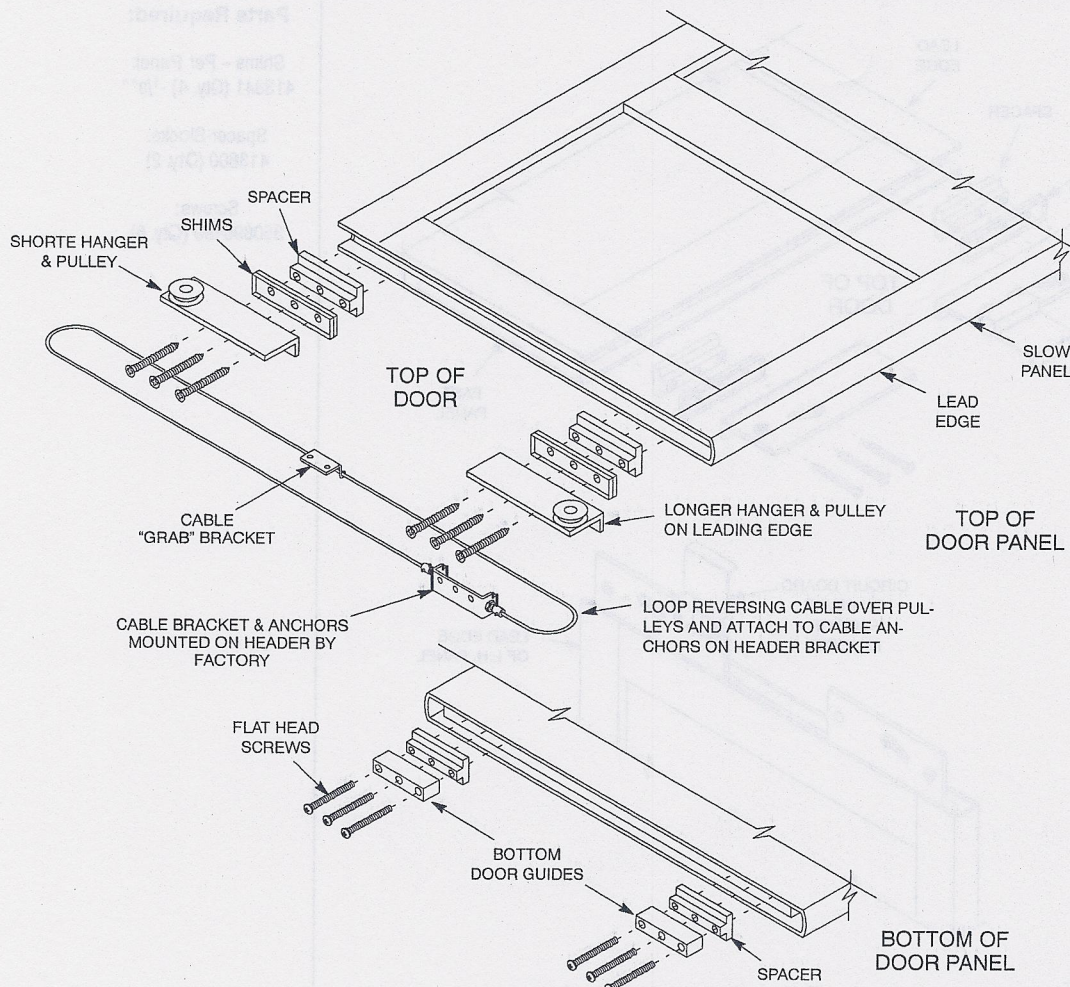
**Parts Required:**

Bottom Guide Kit  
516388

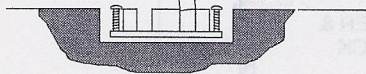
Bottom Door Guide  
413312 (Qty. 2)

Flat Head Soc  
Screws #10-24  
(Qty. 6 per panel)

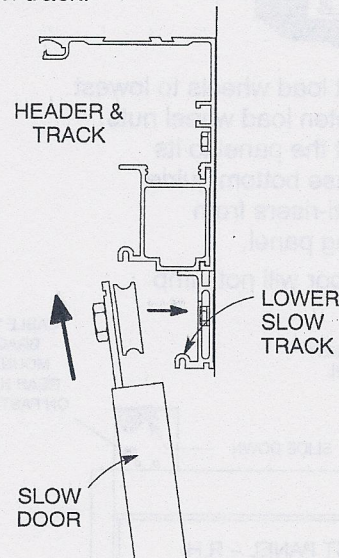
Spacer  
413600 (Qty. 2)



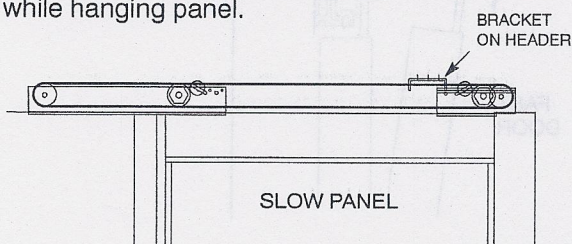
1. Position bottom of door in track as shown.



2. Raise door and position it on track.

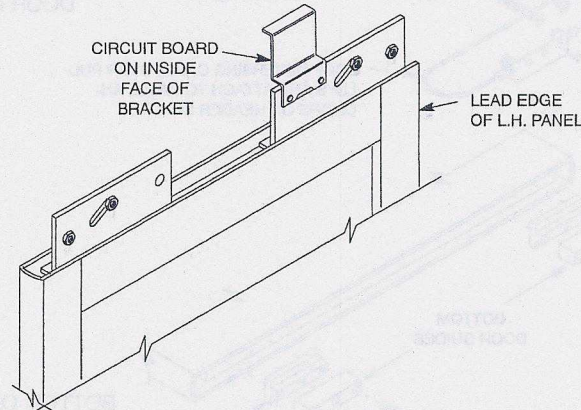
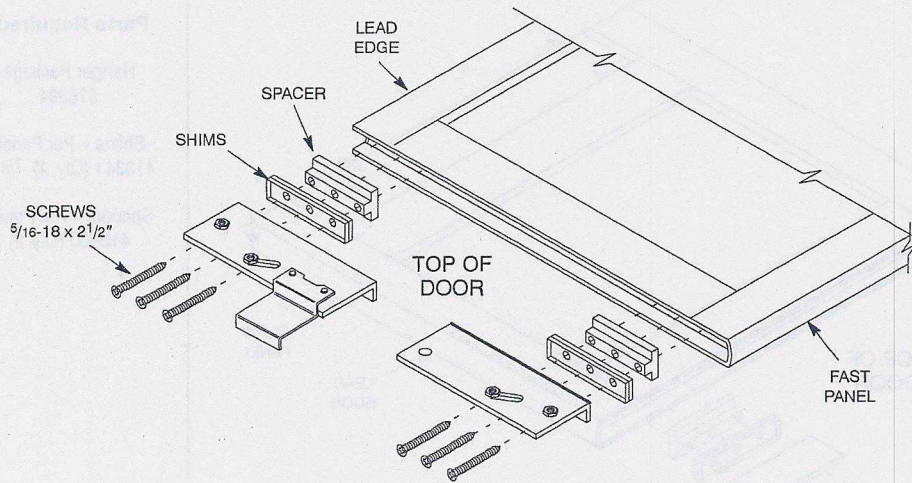


3. Loosen nuts and adjust load wheels to lowest position in hanger. Tighten load wheel nuts. This adjustment will set the panel to its highest position - to ease bottom guide insertion and keeps antirisers from interfering while hanging panel.

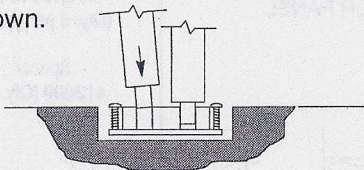




# STEP 8 – DOOR PREPARATION - FAST PANEL

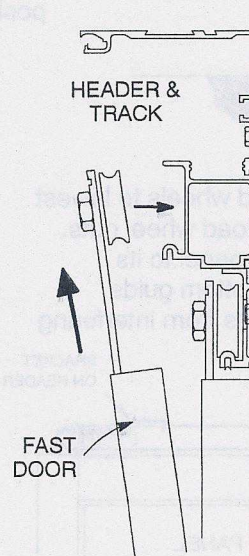
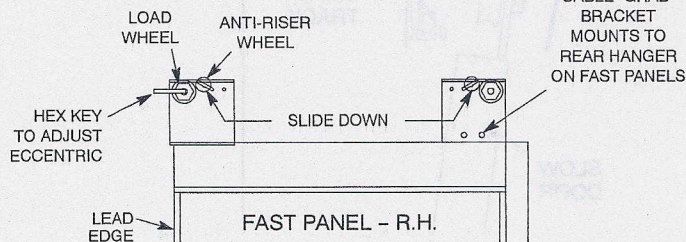


1. Position bottom of door in track as shown.



2. Raise door up on track.

3. Loosen nuts and adjust load wheels to lowest position in hanger. Tighten load wheel nuts. This adjustment will set the panel to its highest position – to ease bottom guide insertion and keeps anti-risers from interfering while hanging panel. Position anti-riser so door will not jump off track.



## Parts Required:

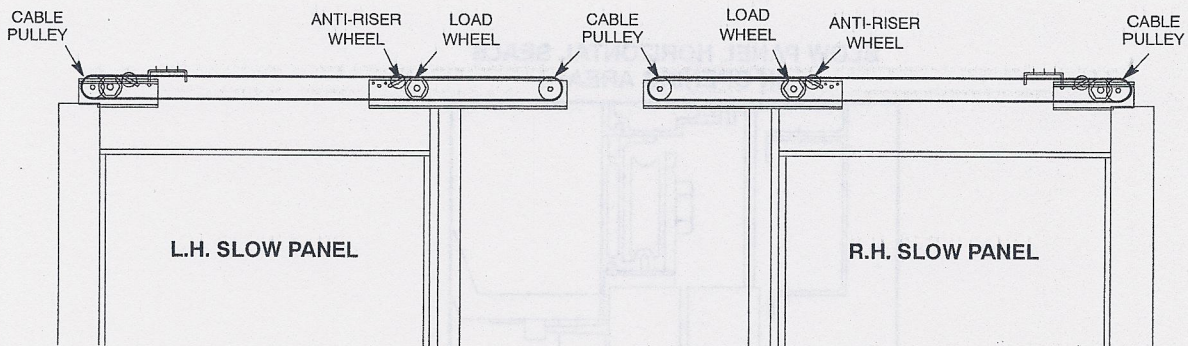
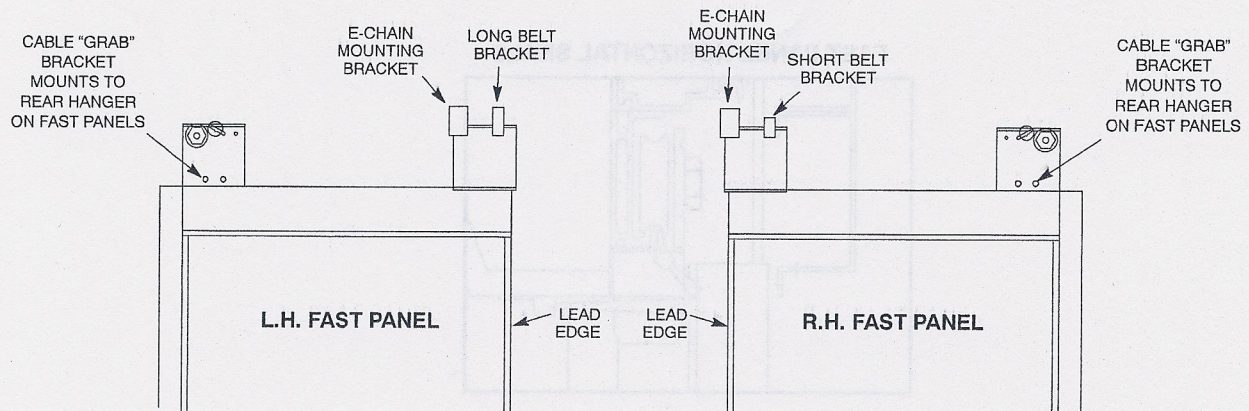
Shims – Per Panel:  
413341 (Qty. 4) - 1/8"

Spacer-Blocks:  
413600 (Qty. 2)

Screws:  
350696499 (Qty. 6)



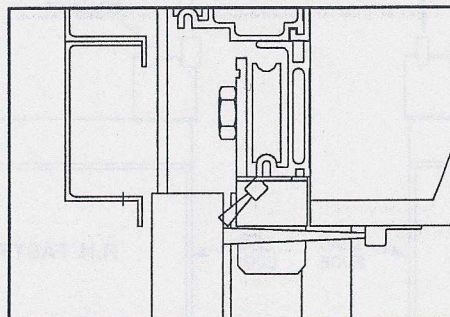
## STEP 9 – E-CHAIN AND BRACKET MOUNTING



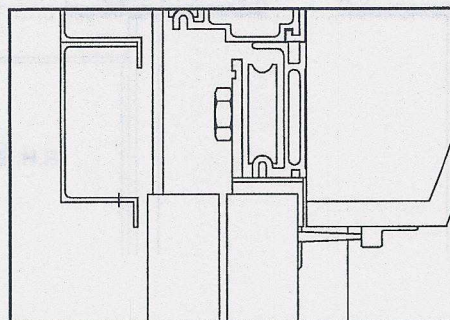


## WEATHER STRIPPING APPLICATION

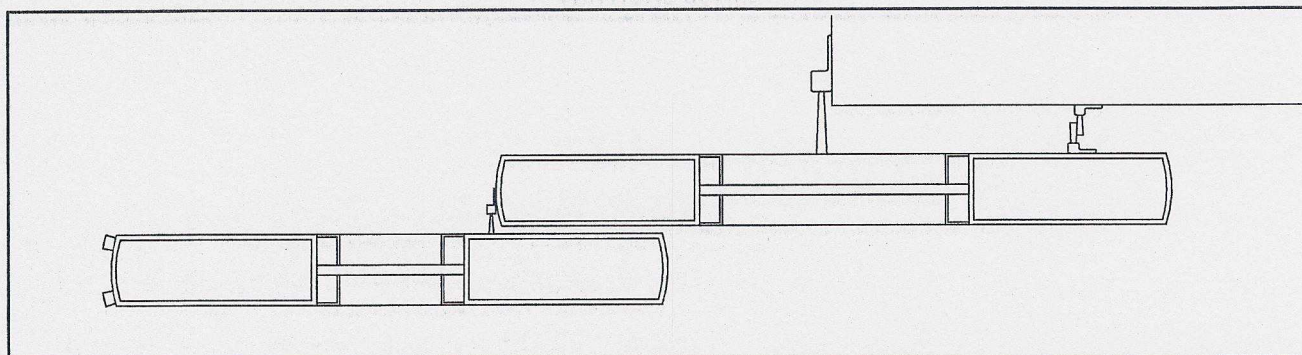
**FAST PANEL HORIZONTAL SEALS**



**SLOW PANEL HORIZONTAL SEALS  
(IN OPENING AREA)**



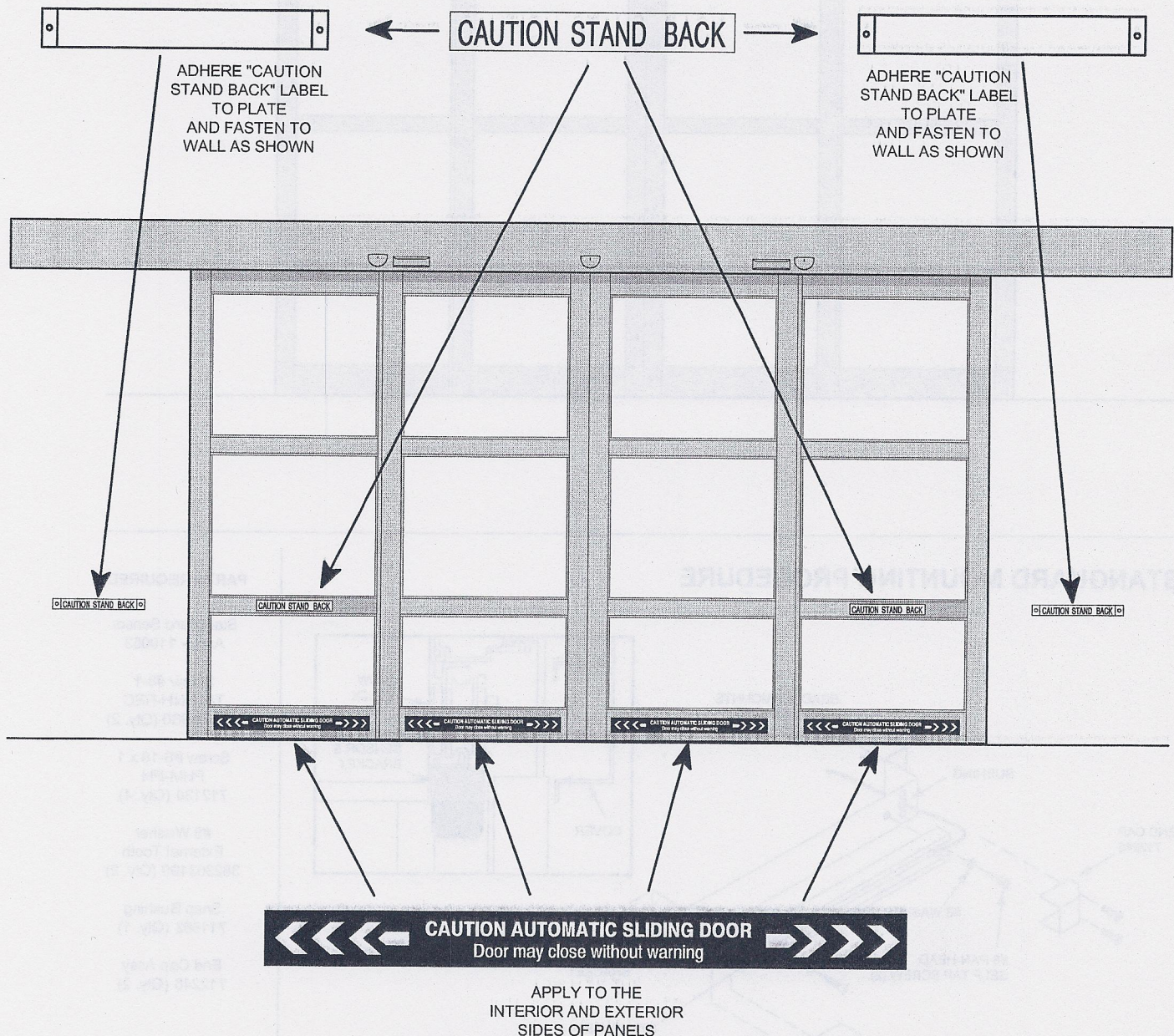
**VERTICAL SEALS**





## SAFETY DECAL PLACEMENT

*Please don't consider the installation complete  
until the Safety Decals are in place.*



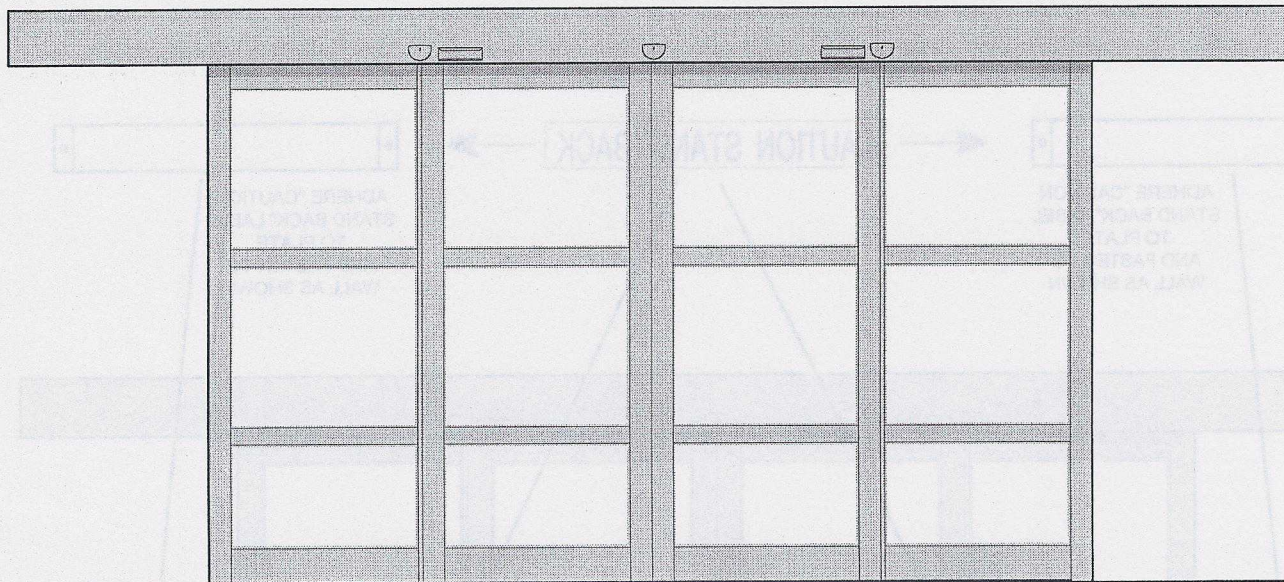


# SENSOR LOCATION & MOUNTING PROCEDURE

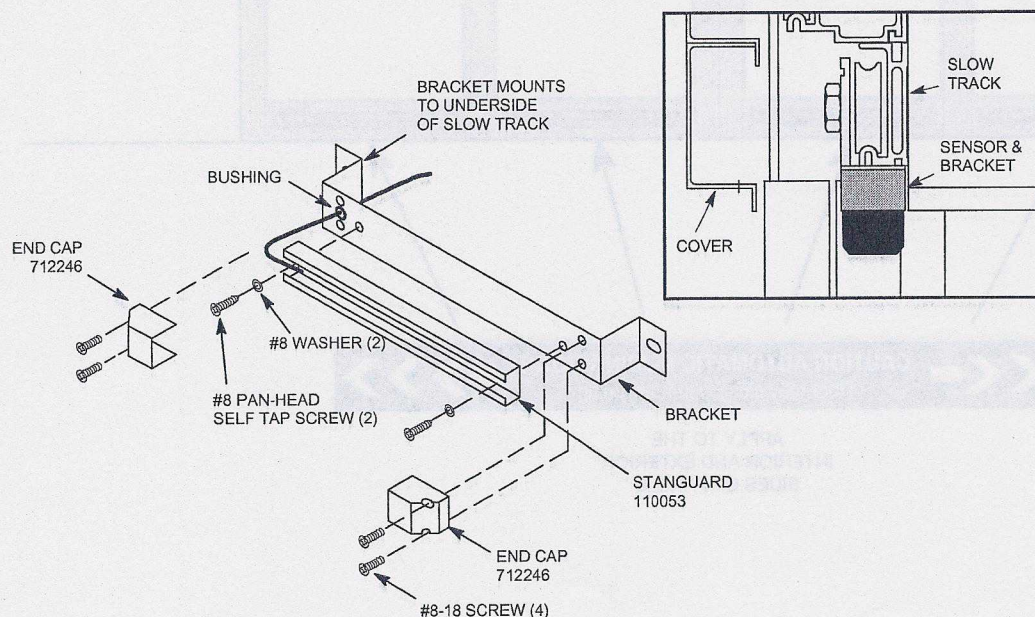
## MOUNTING LOCATIONS MOTION SENSOR

HEADER COVER IS MACHINED FOR TWO SU-100 MOTION DETECTORS AND TWO 203C PRESENCE DETECTORS

ADD THIRD SU-100 TO THE CENTER OF THE OPENING.



## STANGUARD MOUNTING PROCEDURE



### PARTS REQUIRED:

Stanguard Sensor  
Assy - 110053

Screw #8-1  
T/B-PNH-REC  
322732960 (Qty. 2)

Screw #8-18 x 1  
PHM-PH  
712130 (Qty. 4)

#8 Washer  
External Tooth  
382303499 (Qty. 2)

Snap Bushing  
711662 (Qty. 1)

End Cap Assy  
712246 (Qty. 2)

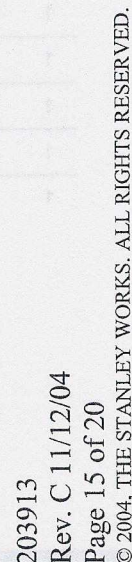


**PACKING LIST**

QTY	PART NO.	DESCRIPTION
1	313615	Control/Power Panel (External Electronics)
1	516394	Hanger Package; containing:
	16 413341	Shim, Hanger
	8 413600	Spacer, Hanger
	4 111509	Hanger - Fast
	24 350696499	Screw, Cap FHL-HEX 5/16-18 x 2 1/2"
	1 111863-LHR	Hanger, LH Rear - Slow
	1 111863-LHL	Hanger, LH Lead - Slow
	1 111863-RHR	Hanger, RH Rear - Slow
	1 111863-RHL	Hanger, LH Lead - Slow
	8 412406	Roller Assy, Anti Riser
	8 711627	Plate, Back Up
	8 411499	Wheel Assy, Load
	16 380257499	Nut HEX-JAM 3/4-10
	12 713379	Screw HEX HD-8M x 1.25-1
	10 521010200	Clamp, Cable .375 ID
	6 351245499	Screw HEX HD 5/16 18 x 5
2	111508	Plate, Header Mounting
1	111501	Header Assembly (External Electronics)
1	111497	Header Assembly (Internal Electronics)
1	111496	Floor Track Kit; containing:
	2 413289	Plate, Splice
	16 315438499	Screw, PHN-REC 1/4-20 x 2"
	8 315431960	Screw, PHN-REC 1/4-20 x 3/4"
	8 382258499	Lock Washer - 1/4
	Internal Electronics . . . 3	111726 Floor Track - Aluminum
	External Electronics . . . 3	111495-2 Long Tracks - Steel
6	516669	SU-100 Motion Detector
4	516721	203C Presence Detector
1	111489-1R	Panel, Slow - RH
1	111489-1L	Panel, Slow - LH
1	111490-1R	Panel, Fast - RH - Inactive
1	111491-1L	Panel, Fast - LH - Active
1	111715	Switch Box Assembly (Internal Electronics)
1	934312965	Stanguard Sensor Pkg. (Internal Electronics)
1	516396	Weatherstripping Kit ; containing:
	2 413344-1	Seal, Vertical - Slow Panel
	4 413344-2	Seal, Horizontal - Slow Panel
	3 413344-3	Seal, Horizontal - Fast Panel
	8 413345-1	Seal, Horizontal - Wall
	2 413346-1	Seal, Horizontal - Angular



SCHEMATIC SCHEMATIC SCHEMATIC SCHEMATIC  
CENTER OFF









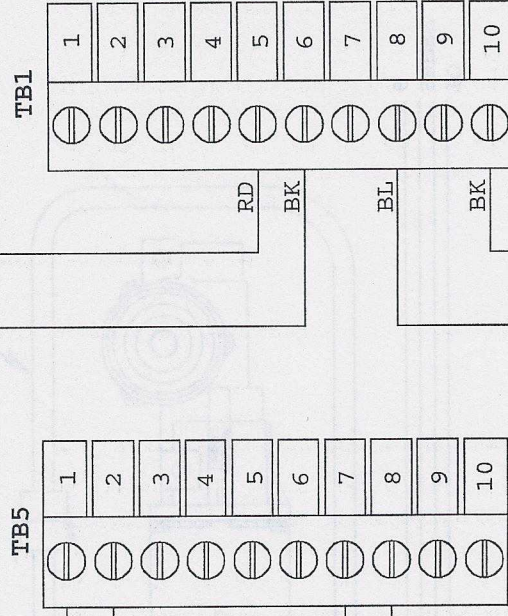
# System Wiring Diagram (Sheet 3 of 6)

COUNTER 413787

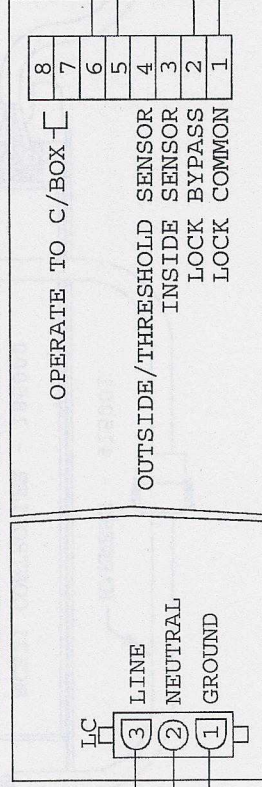
1234567

12 VAC  
TRANSFORMER  
713314

TO  
SHEET  
6



## SOLENOID LOCK ASSEMBLY (OPTIONAL)



TO  
SHEET  
6

203913

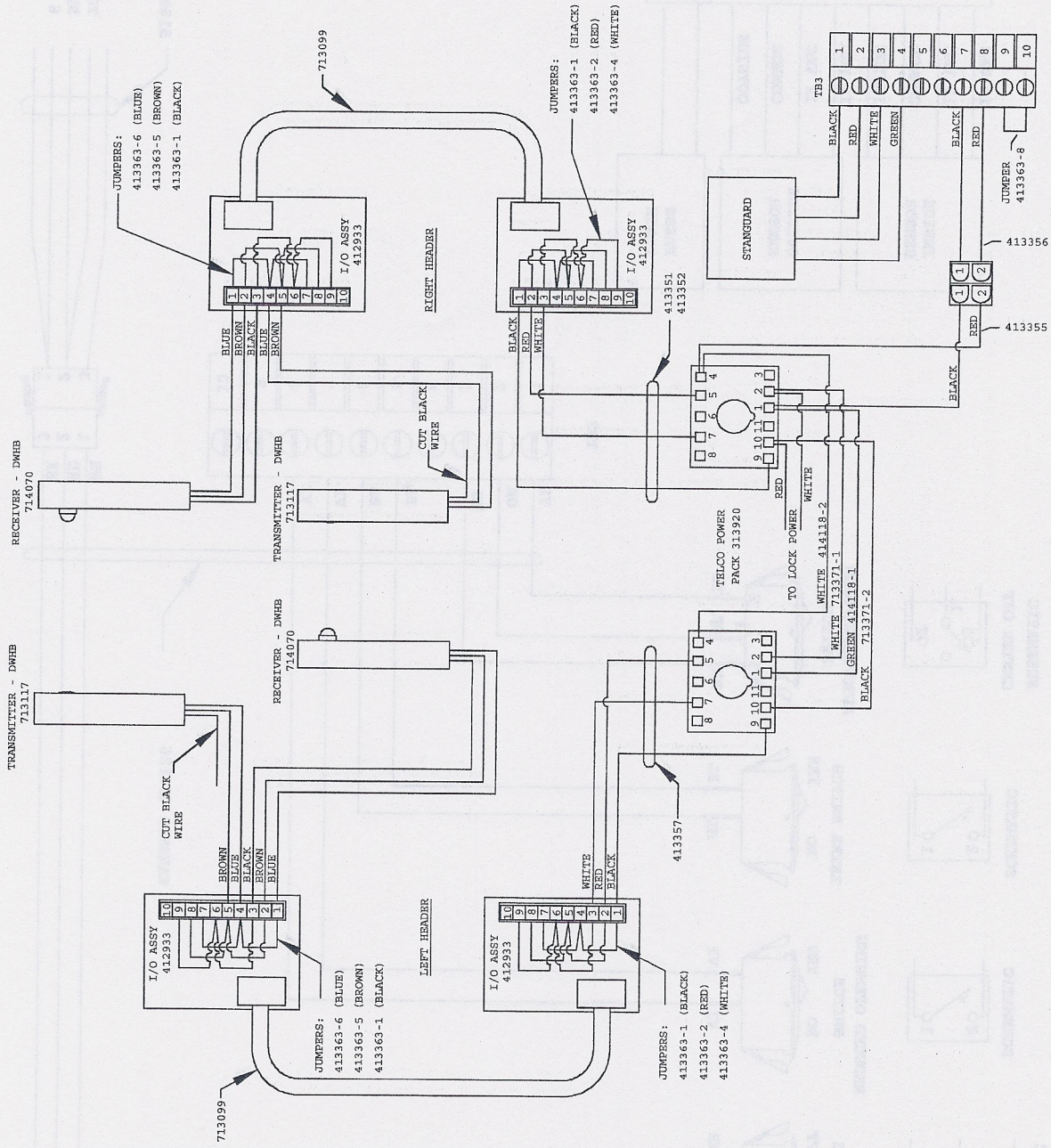
Rev. C 11/12/04

Page 17 of 20

© 2004, THE STANLEY WORKS. ALL RIGHTS RESERVED.



# System Wiring Diagram (Sheet 4 of 6)



203913

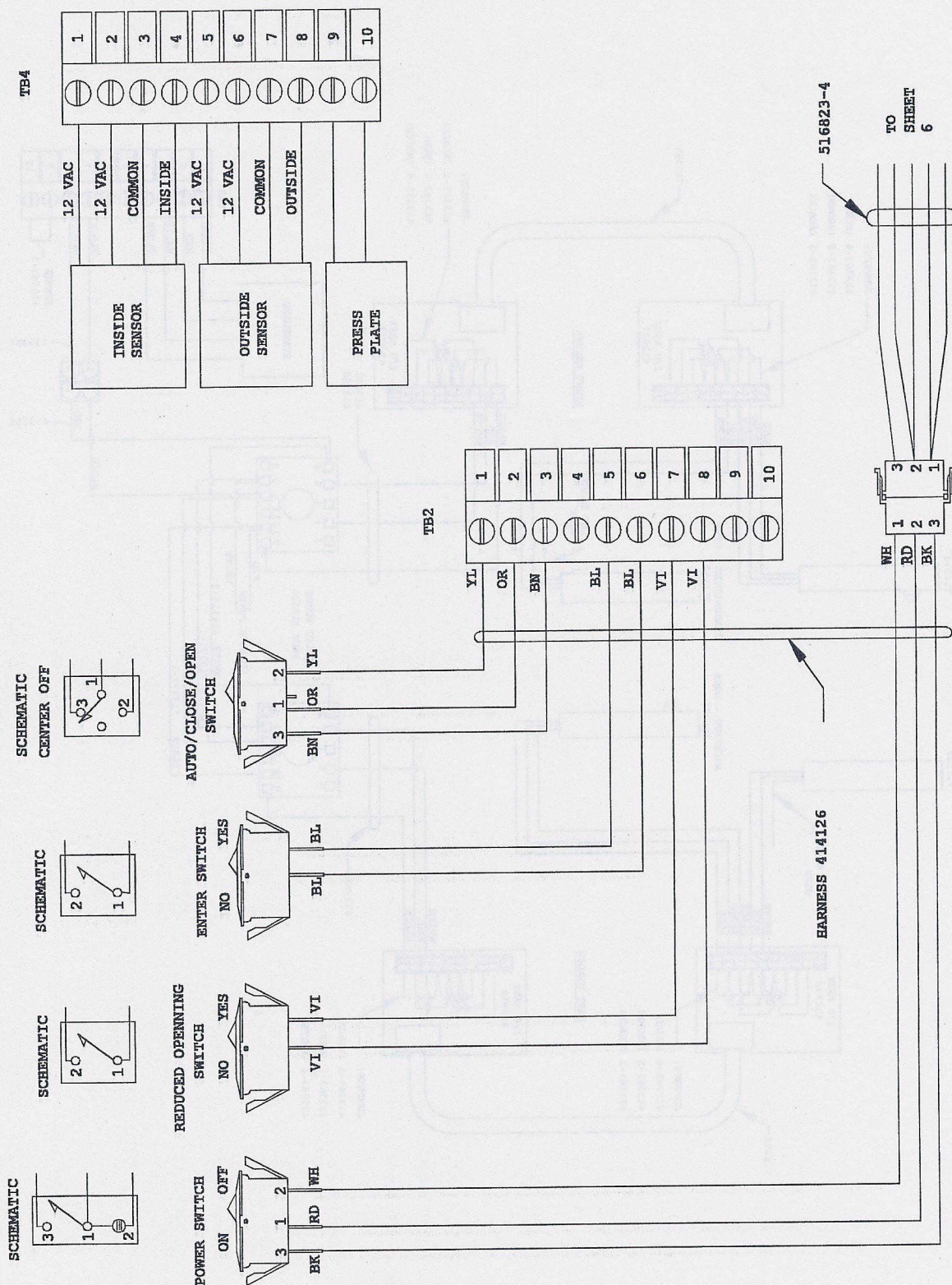
Rev. C 11/12/04

Page 18 of 20

© 2004, THE STANLEY WORKS. ALL RIGHTS RESERVED.



# System Wiring Diagram (Sheet 5 of 6)





**Wiring Diagram for MC521 Controller 185000**

**Components and Connections:**

- MC521 CONTROLLER 185000:** Features two motor terminals and a ground screw.
- 120 VAC LINE:** Provides power to the system.
- 12 VAC TRANSFORMER 713314:** Steps down the voltage for the solenoid lock.
- Solenoid Lock Assembly:** Includes a solenoid lock and a switch (414073).
- Wiring Details:**
  - Line and Neutral:** Connected to the transformer and the solenoid lock.
  - Grounding:** Multiple ground screws and a ground screw in the header are shown.
  - Terminal Block:** Labeled with 1, 2, 3, 4, 5, 6, 7, 8, 9, 10, 11, 12, 13, 14, 15, 16, 17, 18, 19, 20, 21, 22, 23, 24, 25, 26, 27, 28, 29, 30, 31, 32, 33, 34, 35, 36, 37, 38, 39, 40, 41, 42, 43, 44, 45, 46, 47, 48, 49, 50, 51, 52, 53, 54, 55, 56, 57, 58, 59, 60, 61, 62, 63, 64, 65, 66, 67, 68, 69, 70, 71, 72, 73, 74, 75, 76, 77, 78, 79, 80, 81, 82, 83, 84, 85, 86, 87, 88, 89, 90, 91, 92, 93, 94, 95, 96, 97, 98, 99, 100.

**Optional Assembly:** (SEE SHEET 3)

**ASSEMBLY:** (SEE SHEET 3)

© 2004, THE STANLEY WORKS. ALL RIGHTS RESERVED.



